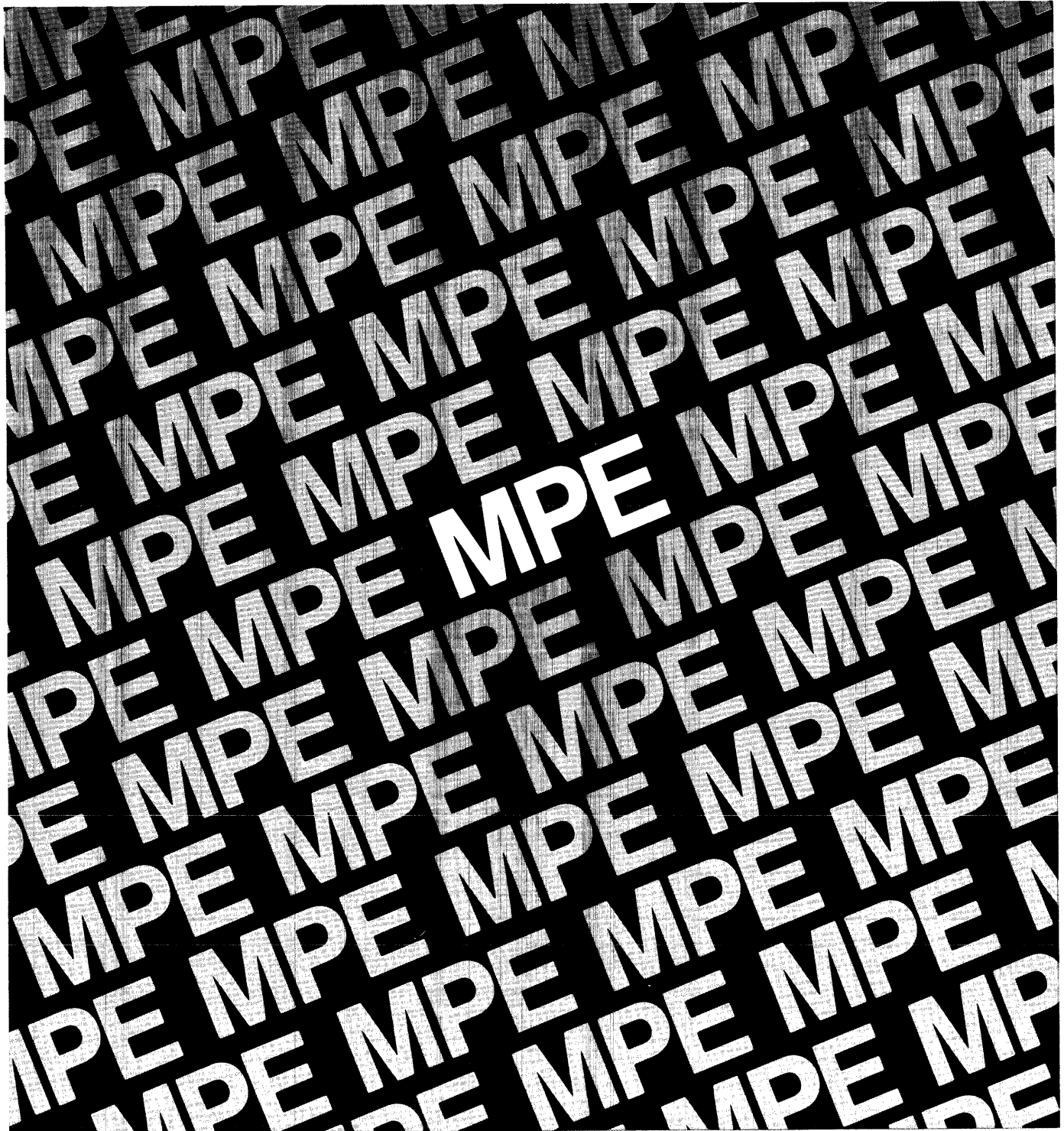


Index to MPE Reference Documents



HP 3000 Computer Systems

Index to MPE Documents



19447 PRUNERIDGE AVE., CUPERTINO, CALIFORNIA 95014

NOTICE

The information contained in this document is subject to change without notice.

HEWLETT-PACKARD MAKES NO WARRANTY OF ANY KIND WITH REGARD TO THIS MATERIAL, INCLUDING, BUT NOT LIMITED TO, THE IMPLIED WARRANTIES OF MERCHANTABILITY AND FITNESS FOR A PARTICULAR PURPOSE. Hewlett-Packard shall not be liable for errors contained herein or for incidental or consequential damages in connection with the furnishing, performance or use of this material.

Hewlett-Packard assumes no responsibility for the use or reliability of its software on equipment that is not furnished by Hewlett-Packard.

This document contains proprietary information which is protected by copyright. All rights are reserved. No part of this document may be photocopied, reproduced or translated to another program language without the prior written consent of Hewlett-Packard Company.

LIST OF EFFECTIVE PAGES

The List of Effective Pages gives the date of the current edition and of any pages changed in updates to that edition. Within the manual, any page changed since the last edition is indicated by printing the date the changes were made on the bottom of the page. Changes are marked with a vertical bar in the margin. If an update is incorporated when an edition is reprinted, these bars are removed but the dates remain. No information is incorporated into a reprinting unless it appears as a prior update.

Third Edition Aug 1978
Fourth Edition Jan 1980
Fifth Edition Apr 1981

PRINTING HISTORY

New editions are complete revisions of the manual. Update packages, which are issued between editions, contain additional and replacement pages to be merged into the manual by the customer. The date on the title page and back cover of the manual changes only when a new edition is published. When an edition is reprinted, all the prior updates to the edition are incorporated. No information is incorporated into a reprinting unless it appears as a prior update. The edition does not change.

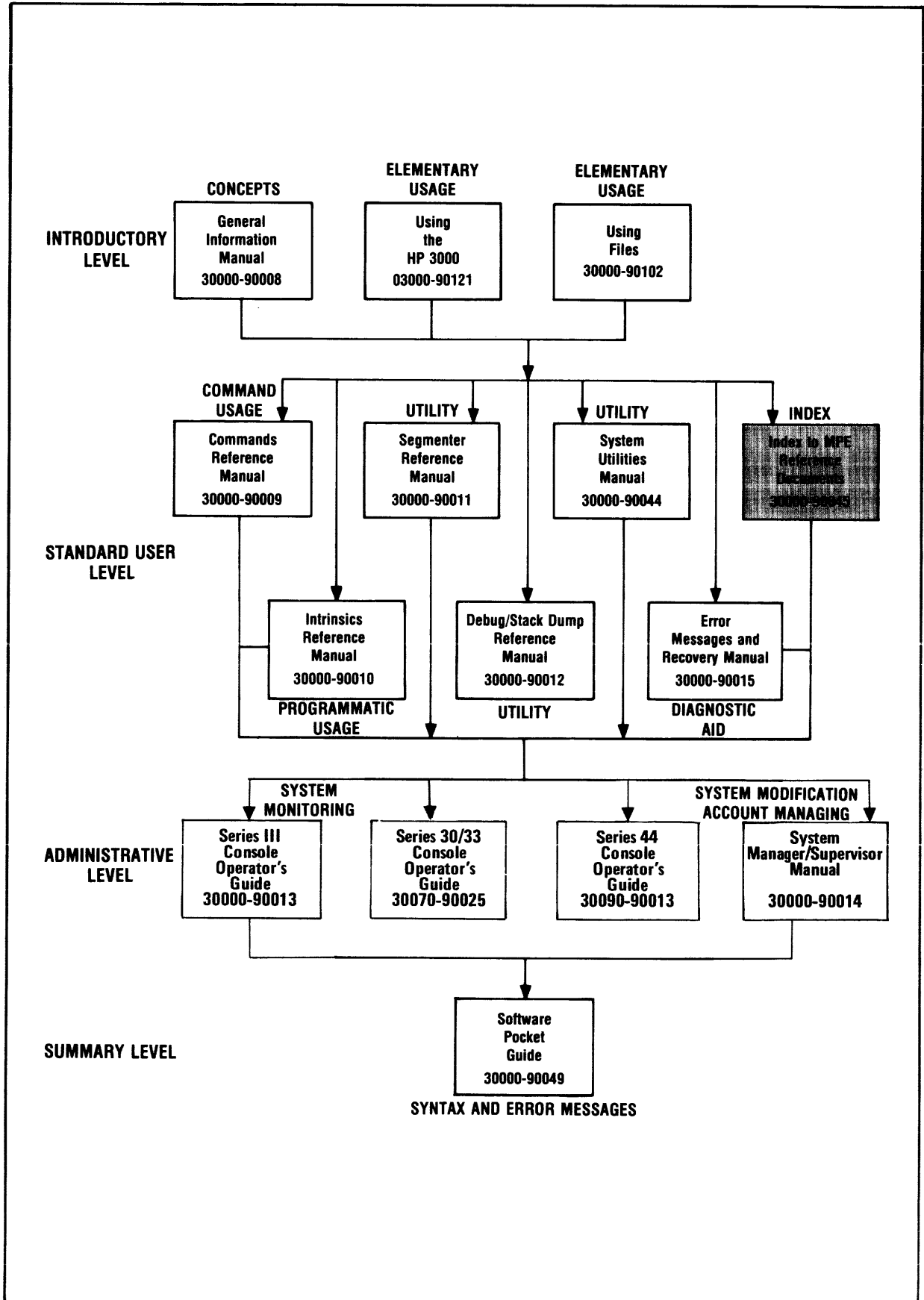
The software product part number printed alongside the date indicates the version and update level of the software product at the time the manual edition or update was issued. Many product updates and fixes do not require manual changes, and conversely, manual corrections may be done without accompanying product changes. Therefore, do not expect a one to one correspondence between product updates and manual updates.

First Edition	Jun 1976
Second Edition	Dec 1977
Third Edition	Aug 1978
Fourth Edition	Jan 1980
Fifth Edition	Apr 1981

This manual is one of the set of manuals that document the Multiprogramming Executive (MPE IV) Operating System, and is a master index of the MPE-IV documents.

The manual plan on the next page indicates the position of this manual (shaded block) in the overall set.

MANUAL PLAN



CONVENTIONS USED IN THIS MANUAL

The index contained in this manual is organized in the following manner:

Topic

Name of manual (abbreviated)

Page(s) in the manual where the topic is discussed.

For example,

Allocating a terminal	INTR 5-24
------------------------------	------------------

If a topic is discussed in more than one manual, the entry is as follows:

Circular Subqueue	SUPR 2-65
	INTR 9-5

Title	Page
Introduction	1
HP 3000 (MPE IV) User Manuals	1
MPE Manuals Master Index	5

INTRODUCTION

This manual provides a master index for the Multiprogramming Executive (MPE IV) Operating System Manuals for the HP 3000. In addition, a listing of the User Manuals for MPE and a brief description of their contents is provided.

HP 3000 (MPE IV) User Manuals

General Information Manual (Part No. 30000-90008)

Introduces the major concepts of the HP 3000 Computer System and provides an introduction to the use of the system.

MPE Commands Reference Manual (Part No. 30000-90009)

Describes how to communicate with MPE using operating system commands entered through an interactive terminal or as part of a batch job stream.

MPE Intrinsic Reference Manual (Part No. 30000-90010)

Describes how to communicate with MPE programmatically using intrinsic (system procedure) calls. This manual also describes the capabilities that are available to users who have been assigned special attributes by the System Manager/System Supervisor.

MPE Segmenter Reference Manual (Part No. 30000-90011)

Describes how to manage User Subprogram Library (USL) files, build and manage Segmented Library (SL) files, and alter the segmentation of a program using the MPE Segmenter.

MPE Debug/Stack Dump Reference Manual (Part No. 30000-90012)

Describes how to debug programs using the debug and stack dump features of MPE.

Series II/III Console Operator's Guide (Part No. 30000-90013)

Describes the commands and functional capabilities available to the Console Operator of an HP 3000 Series II or III operating under MPE IV. This manual also describes the operating instructions for the machine-resident microdiagnostic programs.

System Manager/System Supervisor Manual (Part No. 30000-90014)

Describes the commands and capabilities available to the system administrators (System Manager, System Supervisor, and Account Manager) of an HP 3000 Computer System operating under MPE IV.

Error Messages and Recovery Manual (Part No. 30000-90015)

Summarizes the probable causes and recommended recovery actions for operating system and subsystem error messages.

MPE System Utilities Manual (Part No. 30000-90044)

Describes how to use MPE system utilities which perform such functions as copying disc files to magnetic tape for later retrieval, printing analytical listings of main memory dumps, modifying and listing the content of disc files, and displaying or modifying the content of Segmented Library (SL) files.

Index to MPE Reference Documents (Part No. 30000-90045)

Provides a Master Index of the Multiprogramming Executive (MPE IV) Operating System Manuals for the HP 3000.

Software Pocket Guide (Part No. 30000-90049)

Summarizes all MPE commands, intrinsics, file system error messages, Text Editor, File Copier, Sort/Merge, Query, V/3000, KSAM, System Utilities, Segmenter and Debug. Also included are language compiler subsystem commands, ASCII character set, HP 3000 Series II/III, 30/33, and 44 machine instruction set condition codes and status register and the interrupt/trap segments and parameters.

Using Files: A Guide for New Users of HP 3000 Computer Systems

(Part No. 30000-90102)

Shows the commands, subsystems, and utility programs that are used to manipulate files on HP 3000 Computer Systems. Defines basic file terminology and explains the concept of device-files, the general structure of files, and group and account file security.

Series 30/33 Console Operator's Guide (Part No. 30070-90025)

Describes the commands and functional capabilities available to the Console Operator of an HP 3000 Series 30 or 33 operating under MPE IV. Also discussed are the Remote Console and Software Dump facilities.

Series 44 Console Operator's Guide (Part No. 30090-90013)

Describes the commands and functional capabilities available to the Console Operator of an HP 3000 Series 44 operating under MPE IV. Also discussed are the Remote Console, Software Dump Facilities, and the Control and Maintenance Processor.

HP 2894A Card Reader Punch Operating Manual

(Part No. 30119-90009)

Provides operating and programming information for the HP 2894A Card Reader Punch. Describes the use fo the card reader punch in local (off-line) mode for keypunching activities. Also describes the use of the device on-line in the MPE environment.

Line Printer Operating and Programming Manual

(Part No. 30209-90008)

Provides operating and programming information for the line printer subsystems available with the HP 3000 Computer.

INDEX

! (with user-defined command)	CMND 3-4
* (file back referencing)	CMND 1-9
A	
A command	
definition	DEBUG 2-5
use	DEBUG 3-28
A prefix	
= command	DEBUG 2-27
D command	DEBUG 2-12
M command	DEBUG 2-20
Abort command	
example	CMND 2-8
usage	CMND 2-9
Abort, debug at	DEBUG 4-1
Abort stack analysis	DEBUG 2-31, 4-1
ABORT?, prompt	CMND 1-4
Aborting a process	INTR 4-20
Aborting a program	CMND 1-7
	INTR 4-20
Aborting an operation	CMND 2-8
:ABORTIO command	OPER 1-8, 3-2, 3-3
	OP33 1-8, 3-3
	OP44 1-8, 3-3
:ABORTJOB command	OPER 1-8, 3-4
	OP33 1-8, 3-4
	OP44 1-8, 3-4
Absolute code	
breakpoints in	DEBUG 2-6, 3-28
clear break in	DEBUG 2-9
display	DEBUG 2-11, 3-29
modify	DEBUG 2-19, 3-29
segment index (CST) display	DEBUG 2-13, 3-30
Absolute DB relative (DX)	
display base	DEBUG 2-11
modify base	DEBUG 2-19
Absolute modify	DEBUG 2-19, 3-29
Absolute relative (A)	
display base	DEBUG 2-11
modify base	DEBUG 2-19
:ACCEPT command	OPER 1-8, 3-6
	OP33 1-8, 3-6
	OP44 1-8, 3-6
ACCEPT intrinsic	INTR 2-4
Access, FILE command parameters	CMND 2-58

Access-Mode Abbreviations	UTIL 8-8
Access-mode options for files	INTR 10-91
Access mode, user	INTR 4-10
Accessing APL subsystem	CMND 2-12
Accessing files	INTR 10-8
Accessing files already in use	INTR 10-12
Account Librarian (AL)	
attribute	SUPR 3-2, 5-8
creation	SUPR 5-8
Account Manager (AM)	SUPR 3-2
Account Manager (AM) definition and function	SUPR 3-2, 5-1, 5-2
Account name, at logon	CMND 2-8
Account name, in a JOB command	CMND 2-93
Account password, at logon	CMND 2-8
Account Reports	SUPR 5-9
Account segmented library	
break in	DEBUG 2-6, 23
clear break in	DEBUG 2-9
display location of	DEBUG 2-25
Accounting Information	SUPR 3-9, 4-5, 5-9
Accounting information, displaying	CMND 2-135
Accounting Structure	SUPR 6-53
Accounts	
assigning CV and UV capabilities	SUPR I-16
Attributes, altering	SUPR 5-4
creation and structure of	SUPR 5-4
definition of	SUPR 3-6, 4-4
examples of	SUPR 3-7, 3-8
level security	SUPR 3-11, 3-12
list of	SUPR 4-4
name of	SUPR 3-6
purging	SUPR 3-8
resetting	SUPR 4-7
ACCOUNTS option	SUPR 6-78
ACCOUNTS option (RELOAD)	OPER 5-18
	OP33 5-16
	OP44 5-17
Acquiring global RIN's	INTR 6-2
Acquiring local RIN's	INTR 6-8
ACTIVATE errors	INTR E-13
ACTIVATE intrinsic	INTR 2-4
specifications	INTR 2-5
usage	INTR 8-10
Activating an extra data segment	INTR 8-10
Activating processes	INTR 7-3
Actual file designator	INTR 10-10
Adding new private volume discs	OPER 4-26
	OP33 4-28
	OP44 4-28
Adding new system disc	OPER 4-26

Adding standard I/O devices	OP33 4-28
	OP44 4-28
	OPER 5-24
	OP33 5-21
	OP44 5-22
	DEBUG 2-2
Address in expression	
Addressing	
array	DEBUG 3-13
byte	DEBUG 3-13
common	DEBUG 3-14
indirect	DEBUG 2-2, 2-12,
	2-19, 3-12
ADDRL segmenter command	SEGM 1-5, 2-4
	SEGM 1-5, 2-5
ADJUSTUSL intrinsic	SEGM 1-5, 2-6,
	2-7
ADJUSTUSLF intrinsic	INTR 2-7
AL attribute	SUPR 3-2
:ALLOCATE	SUPR 2-3, 6-124
Allocating a terminal	INTR 5-24
Allocating drives to domain	OPER 4-26
	OP33 4-28
	OP44 4-28
	SUPR 6-124
Allocating programs and procedures	INTR 10-25,
Allocation of devices	10-26
:ALLOW command	OP44 1-8, 3-7
	OP33 1-8, 3-7
	OPER 1-8, 3-7
	SUPR 2-4, 4-5
:ALTACCT	
ALTDSEG intrinsic	
specifications	INTR 2-9
usage	INTR 8-15
ALTER Function	UTIL 11-5, 11-6
:ALTGROUP	SUPR 2-8, 5-2
ALTJOB command	OPER 1-8, 3-9
	OP33 1-8, 3-9
	OP44 1-8, 3-9
ALTLOG command	CMND 2-9
example	CMND 2-9
operation	CMND 2-9
parameters	CMND 2-9
syntax	CMND 2-9
usage	CMND 2-9
ALTSEC command	CMND 2-9
example	CMND 2-11
operation	CMND 2-11
parameters	CMND 2-10
usage	CMND 2-11
:ALTSPoolFILE command	OP44 1-8, 3-11
	OP33 1-8, 3-11
	OPER 1-8, 3-11,

:ALTUSER	4-12
ALTVSET	SUPR 2-12, 5-4
	SUPR 2-15, 4-12,
	I-5
AM attribute	SUPR 3-2
Aoptions	
bit summary	INTR 2-51
description	INTR 2-61
APL command, example	CMND 2-12
APL command, operation	CMND 2-12
APL command, usage	CMND 2-12
Arithmetic traps	INTR 4-30
ARITRAP intrinsic	
specifications	INTR 2-11
usage	INTR 4-30
Array addressing	DEBUG 3-13
Arrays, searching	INTR 4-3
AS subqueue	INTR 9-7
	SUPR 2-67
ASCII Characters in expression	DEBUG 2-2
ASCII Files	CONV 3-7
ASCII intrinsic	
specifications	INTR 2-12
usage	INTR 4-10
ASCII mode	
display	DEBUG 2-11
expression result	DEBUG 2-27
modify	DEBUG 2-19
ASCII parameter	DEBUG 2-34
ASOCTABL	UTIL 14-1 - 14-4
Error Messages	UTIL 14-4
Example	UTIL 14-3
Parameters	UTIL 14-1
Procedure	UTIL 14-1, 14-2
Syntax	UTIL 14-1
ASSEMBLE Statements	CONV 3-4
ASSOCIATE command	CMND 2-13
example	OPER 4-33
operation	CMND 2-13
parameters	CMND 2-13
syntax	CMND 2-13
usage	CMND 2-13
Association Table	SUPR 4-14
ATTACHIO Procedure	CONV 2-6
ATTIO Procedure	CONV 2-6
Attributes	UTIL 8-1
Account Librarian (AL)	SUPR 3-2, 5-8
Account Manager (AM)	SUPR 3-2
altering account	SUPR 5-4
Batch Access (BA)	SUPR 3-5
Capability Class	SUPR 3-3

Diagnostician (DI)	SUPR 3-3
Extra Data Segments (DS)	SUPR 3-4
File Access	SUPR 3-3
Group Librarian (GL)	SUPR 3-3, 5-8
Interactive Access (IA)	SUPR 3-5
Local	SUPR 3-5
Multiple RINS (MR)	SUPR 3-4
Non-sharable Devices (ND)	SUPR 3-3
Permanent Files (SF)	SUPR 3-3
Private disc volumes (UV)	SUPR 3-3
Privileged Mode (PM)	SUPR 3-4
Process-handling(PH)	SUPR 3-5
Program	SUPR 3-3
System Manager (SM)	SUPR 3-1
System Supervisor (OP)	SUPR 3-2
User	SUPR 3-1
AUXSL segmenter command	INTR 4-10
Available file table (AFT)	SEGM 1-5, 2-8
Avoiding deadlocks	INTR 10-17
	INTR 7-13
B	
B command	
definition	DEBUG 2-6
use	DEBUG 2-6
use in privileged mode	DEBUG 3-28
Back referencing files	CMND 1-9
	INTR 10-10
Backing up disc files	SUPR 6-54, 6-116
Backing up disc files on tape	SUPR 5-9
Backup, recommended procedures	OP33 I-1
Bank number absolute (EA)	
display	DEBUG 2-13, 3-30
extended absolute address base	DEBUG 2-11, 3-29
BASIC	CONV 3-7
BASIC command	
example	CMND 2-15
parameters	CMND 2-14
usage	CMND 2-14
BASIC Files	CONV 3-7
BASIC Interpreter	CONV 3-7
BASIC programs	
compiling	CMND 2-16,
	2-17, 2-19
executing	CMND 2-16
interpreting	CMND 2-14
preparing	CMND 2-16, 2-19
BASICGO command	
example	CMND 2-16
parameters	CMND 2-16

usage	CMND 2-16
BASICOMP command	
example	CMND 2-18
operation	CMND 2-18
parameters	CMND 2-17
usage	CMND 2-17
BASICPREP command	
example	CMND 2-20
operation	CMND 2-20
parameters	CMND 2-19
usage	CMND 2-19
Batch Access (BA) attribute	SUPR 3-5
Batch job	
initiation	CMND 2-93
spooling	CMND 2-205
submitting	CMND 2-95
using SETDUMP in	DEBUG 4-6
Batch processing	OPER 1-1
	OP33 1-1
	OP44 1-1
	OPER 2-3
BATTERY STATUS	CONV 3-8
BCONVERT Conversion Program	CONV 3-9
BCONVERT Error Messages	CONV 3-3
Binary File I/O	
BINARY intrinsic	
specifications	INTR 2-14
usage	INTR 4-13
Bit field extract	DEBUG 2-2
Block factor	INTR 2-65, 10-3
Block size	INTR 10-4
Block transfers	INTR 5-22
Blocks	INTR 10-2
Bounds check	INTR 1-11
BREAK key	
for interrupting commands	CMND 1-6, 2-1
for suppressing messages	CMND 1-6
for suspending program execution	CMND 1-7
BREAKJOB command	OPER 1-8, 3-13
	OP33 1-8, 3-13
	OP44 1-8, 3-13
Breakpoint	
clear	DEBUG 2-9, 3-8
conditional	DEBUG 2-6, 3-7
definition	DEBUG 3-6
display	DEBUG 2-7, 3-7
establish	DEBUG 2-6, 3-6
establish in privileged mode	DEBUG 3-28
permanent	DEBUG 2-6, 3-7
private	DEBUG 2-5, 3-28
repeated	DEBUG 2-7, 3-7
system global	DEBUG 2-5, 3-28
Breakpoint Table, size of	SUPR 6-13, 6-40

BS subqueue	INTR 9-7
Buffering	SUPR 2-67
BUILD Command	INTR 10-7
example	CONV 2-22
operation	CMND 2-25
parameters	CMND 2-25
usage	CMND 2-21
BUILDRL segmenter command	CMND 2-24
BUILDSDL segmenter command	SEGM 1-5, 2-9
BYE command	SEGM 1-5, 2-10
example	CMND 2-26
operation	CMND 2-26
usage	CMND 2-26
Byte addressing	DEBUG 3-13
C	
C command	
definition	DEBUG 2-9
use	DEBUG 3-8
C prefix	
D command	DEBUG 2-12
M command	DEBUG 2-20
= command	DEBUG 2-27
Calculating disc space	INTR 10-2
CALENDAR	CONV 2-2
Calendar date	INTR 4-44
CALENDAR intrinsic	
specifications	INTR 2-15
usage	INTR 4-44
Calling intrinsics from other languages	INTR 1-10
Calling intrinsics from SPL	INTR 1-2
Capability sets	SUPR 3-1
Capability-Class Attributes	SUPR 3-3
Capability-Set Abbreviations	UTIL 8-8
Card reader	INTR 5-3
	OPER 5-3
Carriage control	
byte	INTR 2-70
characters	INTR 5-1
codes	INTR 5-7
directives	INTR 2-89, 5-7
	OPER 4-20
summary	INTR 2-90
Carriage-return characters	INTR 5-2
Cartridges (care and handling)	OPER E-1
CATALOG	SUPR G-1
CAUSEBREAK intrinsic	
specifications	INTR 2-16
usage	INTR 4-19

CEASE segmenter command	SEGM 1-5, 2-12
Central processor run-time	INTR 4-44
Changing DL to DB area size	INTR 4-22
Changing forms on a line printer	OPER 5-21
	OP33 5-20
	OP44 5-21
Changing input echo facility	INTR 5-11
Changing size of an extra data segment	INTR 8-15
Changing terminal characters	INTR 5-10
Changing terminal speed	INTR 5-10
Changing Z to DB area size	INTR 4-27
Channel number	
definition	SUPR 6-5
specifying for a device	SUPR 6-23, 6-80
CHANNEL Prompt	CONV 2-6
CHECKDEV	CONV 2-2
CHRONOS	CONV 2-2
CICAT program	SUPR G-2
CIR Address Information (Series II)	OPER C-3
CIR Contents	UTIL 3-2
Circular files	INTR 3-9 - 3-12
Features of intrinsics	INTR 3-10
Circular subqueue	SUPR 2-65
	INTR 9-5
	INTR 10-25
Classification of devices	
CLEANUSL intrinsic	
specifications	INTR 2-17
CLOCK	CONV 2-2
CLOCK intrinsic	
specifications	INTR 2-19
usage	INTR 4-44
CLOSELOG intrinsic	
specifications	INTR 2-19
usage	INTR 10-93
Closing a new file as a permanent file	INTR 10-40
Closing a new file as a temporary file	INTR 10-39
Closing files	INTR 10-39
Closing magnetic tape files	INTR 10-73
CMP system halt and hardware failure codes	OP44 B-9 - B-11
COBOL command	
compiling	CMND 2-27
example	CMND 2-28
operation	CMND 2-28
parameters	CMND 2-27
usage	CMND 2-28
COBOL programs	
compiling	CMND 2-9, 2-31
executing	CMND 2-29
preparing	CMND 2-29, 2-31
COBOL II	
FDELETE	INTR 2-61
FFILEINFO	INTR 2-63

Relative I/O	INTR 10-6
COBOLGO command	
example	CMND 2-30
operation	CMND 2-29
parameters	CMND 2-29
usage	CMND 2-29
COBOLPREP command	
example	CMND 2-32
parameters	CMND 2-31
usage	CMND 2-32
Code segment relative (CO)	
display base	DEBUG 2-11, 3-29, 3-31
freeze	DEBUG 2-17, 3-30
unfreeze	DEBUG 2-16, 3-30
Code Segment Table (CST)	SUPR 6-11
changing size of	SUPR 6-11, 6-35, 6-48
definition of	SUPR 6-124
format	SUPR 6-124
Code Segments	CONV 2-3
changes to limits	INTR 8-1
changing maximum size of	SUPR 6-15, 6-47
table (CST)	SUPR 6-47
Cold Dump procedure	SUPR 6-11
Cold load error messages	OPER 5-31
	OPER A-1 - A-8
	OP33 B-1 - B-8
	SUPR 6-105
	OP44 B-1 - B-8
Cold loading diagnostic utility	OP44 5-31
	OP33 5-30
Cold load halts	OPER A-1
	OP33 B-1
Cold load hardware halts	OP44 B-7 - B-8
Cold Loading SADUTIL	UTIL 1-6
Cold-Load Procedure	CONV 2-6
COLD LOAD Switch	OP33 2-3, 2-6
Cold Load, types of	SUPR 6-62
COLDSTART	OPER 4-23, 5-12, F-1
	OP33 4-22, 5-10
	SUPR 6-59, 6-62
	OP44 4-22, 5-11
Collecting mail	INTR 7-12
Colon	SEGM 2-1
COMMAND intrinsic	
specifications	INTR 2-20
usage	INTR 4-9
Command	
Breakable	CMND 1-8
Continuation characters	SUPR 1-4

Copy	SEGM 1-5, 2-13
Correcting entry of	CMND 2-122
DEBUG	DEBUG 2-2
definitions of	SUPR 2-1
Elements	SUPR 1-1
Errors	CMND 1-4
	SUPR 1-4
execution at logon	CMND 1-5
execution from a program	CMND 1-5
Functional list	CMND 2-3
how to edit (REDO)	CMND 2-122
how to enter	CMND 1-1
	SUPR 1-1
interrupting execution of	CMND 1-6
keyword parameters	SUPR 1-3
logon, APL command	CMND 2-12
logon, example	CMND 2-7
logon, parameters	CMND 2-4
logon, usage	CMND 2-6
MPE	DEBUG 2-2
	SEGM 1-5, 2-1,
	2-31
name	SUPR 1-3, 1-4
Non-breakable	CMND 1-8
parameters, formatting	INTR 4-4
parameter list	CMND 1-2, 1-5,
	2-24, 2-25
privileged mode summary	DEBUG 3-27
program	CMND 1-6
programmatic execution	SUPR 1-4
Segmenter	SEGM 1-5, 2-2,
	2-4 - 2-34
sequence numbers	CMND 1-5
specification	DEBUG 2-1
summary	DEBUG 2-4
Command Interpreter Error	
and Warning Messages	OPER 6-8
Commands	
:ABORTIO	OPER 3-2
	OP33 3-3
	OP44 3-3
:ABORTJOB	OPER 3-4
	OP33 3-4
	OP44 3-4
:ACCEPT	OPER 3-6
	OP33 3-6
	OP44 3-6
ADDRL	SEGM 1-5, 2-4
ADDSL	SEGM 1-5, 2-5
:ALLOCATE	SUPR 2-3, 6-124
:ALLOW	OP44 3-7
	OP33 3-7

:ALTACCT	OPER 3-7
:ALTGROUP	SUPR 2-4, 4-5
:ALTJOB	SUPR 2-8, 5-2
	OPER 3-9
	OP33 3-9
	OP44 3-9
:ALTSPOOLFILE	OPER 3-11
	OP33 3-11
	OP44 3-11
:ALTUSER	SUPR 2-12, 5-4
:ALTVSET	SUPR 2-15, 4-12,
	I-5
AUXUSL	SEGM 1-5,2-8
:BREAKJOB	OPER 3-13
	OP33 3-13
	OP44 3-13
BUILDRL	SEGM 1-5, 2-9
BUILDSL	SEGM 1-5, 2-10
BUILDUSL	SEGM 1-5, 2-11
CEASE	SEGM 1-5, 2-12
:CONSOLE	OP44 3-14
	OP33 3-14
	OPER 3-14, 4-34
:DEALLOCATE	SUPR 2-17, 6-124
:DELETESPOOLFILE	OPER 3-15, 4-12
	OP33 3-15
	OP44 3-15
:DISALLOW	OPER 3-16
	OP33 3-16
	OP44 3-16
:DISMOUNT	SUPR I-16
:DOWN	OPER 3-18
	OP33 3-18
	OP44 3-18
:DOWNLOAD	OPER 3-19, 4-14
	OP33 3-19
	OP44 3-19
:DSCONTROL	OP33 3-20
	OPER 3-20
:DSTAT	SUPR I-17
EXIT	SEGM 1-5, 2-14
:FOREIGN	OP44 3-23
	OP33 3-23
	OPER 3-23
:GIVE	OPER 3-24
	OP33 3-24
	OP44 3-24
:HEADOFF	OPER 3-25
	OP33 3-25
	OP44 3-25
:HEADON	OPER 3-26
	OP33 3-26

HIDE	OP44 3-26
IMLCONTROL	SEGM 1-5, 2-17
	OP44 3-27
	OP33 1-8, 3-27
: IMLMGR	OPER 3-27
: JOBFENCE	SUPR 2-18
	OPER 3-29
	OP33 3-29
: JOBPRI	OP44 3-29
: JOBSECURITY	SUPR 2-19
	OPER 3-30
	OP33 3-30
: LDISMOUNT	OP44 3-30
	OPER 3-31
	OP33 3-31
: LIMIT	OP44 3-31
	OPER 3-32
	OP33 3-32
: LISTACCT	OP44 3-32
	SUPR 2-20, 4-4,
	D-1
: LISTGROUP	SUPR 2-22, 4-4,
	D-4
LISTRL	SEGM 1-5, 2-20
LISTSL	SEGM 1-5, 2-21
: LISTUSER	SUPR 2-24, 4-4,
	D-7
LISTUSL	SEGM 1-5, 2-22
: LISTVS	SUPR I-16
: LMount	OPER 3-33
	OP33 3-33
: LOG	OP44 3-33
	OP44 3-35
	OP33 3-35
=LOGOFF	OPER 3-35
	OPER 3-36
	OP33 3-36
=LOGON	OP44 3-36
	OPER 3-37
	OP33 3-37
: MOUNT	OP44 3-37
: MPLINE	SUPR I-15
	OP44 3-38
=MPLINE	OP33 1-8, 3-38
: MRJECONTROL	OPER 3-38
	OP44 3-41
	OP33 1-8, 3-32
	OPER 3-41
: NEWACCT	SUPR 2-26, 4-4
: NEWGROUP	SUPR 2-30, 5-3
NEWSEG	SEGM 1-5, 2-23
: NEWUSER	SUPR 2-33, 5-4

:NEWVSET	SUPR 2-36, 4-11, I-4
:OUTFENCE	OPER 3-43 OP33 3-44 OP44 3-44
PREPARE	SEGM 1-5, 2-24, 2-25
:PURGEACCT	SUPR 2-38, 4-8
:PURGEGROUP	SUPR 2-40, 5-7
PURGERBM	SEGM 1-5, 2-26
PURGERL	SEGM 1-5, 2-27
PURGESL	SEGM 1-5, 2-28
:PURGEUSER	SUPR 2-42, 5-8
:PURGEVSET	SUPR 2-43, 4-12, I-6
:QUANTUM	SUPR 2-43, 6-107
:REFUSE	OPER 3-44 OP33 3-45 OP44 3-45
=REPLY/:REPLY	OPER 3-45 OP33 3-46 OP44 3-46
:REPORT	SUPR 2-44, 4-6
:RESETACCT	SUPR 2-46, 4-7
:RESTORE	SUPR 2-47, 6-121
:RESUMEJOB	OPER 3-47 OP33 3-48 OP44 3-48
:RESUMELOG	SUPR 2-51, 6-130
:RESUMESPOOL	OPER 3-48, 4-12a OP33 3-49 OP44 3-49
REVEAL	SEGM 1-5, 2-29
RL	SEGM 1-5, 2-30
:SEGMENTER	SEGM 1-5, 2-31
:SETCATALOG	SUPR 2-52, 4-13, 5-10
:SHOWCATALOG	SUPR 2-54, 4-13, 5-10
:SHOWCOM	OP44 3-51 OP33 3-51 OPER 3-49
:SHOWLOG	SUPR 2-55, 6-130
:SHOWQ	SUPR 2-56, D-10
=SHUTDOWN	OPER 3-51 OP33 3-53 OP44 3-53
SL	SEGM 1-5, 2-32
:SPEED	OP44 3-54
:STARTSPOOL	OPER 3-52 OP33 3-54 OP44 3-56

:STOPSPPOOL	OP44 3-58
	OP33 3-56
:STORE	OPER 3-54
	SUPR 2-58, 4-7,
	6-117
:STREAMS	OP44 3-59
	OP33 3-57
	OPER 3-55
:SUSPENDSPOOL	OP44 3-60
	OP33 3-58
	OPER 3-56, 4-12
:SWITCHLOG	SUPR 2-62, 6-127
:SYSDUMP	SUPR 2-63, 6-16,
	6-54, 6-116
:TAKE	OPER 3-57
	OP33 3-59
	OP44 3-61
:TUNE	SUPR 2-65, 6-15
:UP	OPER 3-58
	OP33 3-60
	OP44 3-62
USE	SEGM 1-5, 2-33
:VINIT	SUPR 2-69
:VMOUNT	OPER 3-59
	OP33 3-61
	OP44 3-63
USL	SEGM 1-5, 2-34
:VSUSER	SUPR I-17
:WARN	OPER 3-61
	OP33 3-63
	OP44 3-65
	OPER 3-63
	OP33 3-65
	OP44 3-67
	CMND 2-33
	CMND 2-33
	INTR 4-31
	DEBUG 3-14
	CONV 3-2
COMMENT command	
example	
usage	
Commercial instruction traps	
Common addressing	
COMMON Statement	
Communication	
inter-process	
process-to-process	
Communications Error Codes	
COMPACT option	
COMPACT option (RELOAD)	
Compiling BASIC programs	
Compiling COBOL programs	
Compiling FORTRAN programs	
	CMND 2-16, 2-17,
	2-19
	CMND 2-29, 2-31
	CMND 2-69, 2-71

Compiling SPL programs	CMND 2-197, 2-199
COND command, VINIT	SUPR 2-69, I-33
	OP33 D-8
	OP44 D-8
	OPER D-8
	UTIL 1-11
COND Function	
Condition codes	
definitions	INTR 1-11
file system	INTR 10-12
CONF Function	UTIL 1-13
Configuration, changing device	SUPR 6-4
Configuration of system devices	OPER 5-20, 5-21, F-1, F-2
	OP33 5-21, 5-23
	OP44 5-22 - 5-24
	CONV 2-4
	SUPR 6-19 -6-53, B-1
Configurator/Initiator Changes	OP33 5-37
Configurator/User dialogue	OPER 5-33
	CMND 2-34
Connecting data terminals	OP33 1-8, 3-14
	OP44 3-14
	OPER 1-8, 3-14, 4-34
CONSOLE command	CMND 2-34
	CMND 2-34
	CMND 2-35
Example	OPER 1-7
Parameters	OP33 1-7
Usage	OP44 1-7
Console command summary	OPER 1-6, 1-8, 3-1, 3-2
	OP33 1-6, 1-8, 3-1, 3-2
	OP44 1-6, 1-8, 3-1, 3-2
Console commands	SUPR 6-44,6-131, 6-150
	SUPR 4-14
	OPER 6-1, 6-15
	OP33 A-1
	OP44 A-1
Console logging	INTR 4-18
Console, Managing Expanded Capabilities	SUPR I-17
Console messages	OPER 1-5, 5-1
	OP33 1-5, 5-1
	OP44 1-5, 5-1
Console Operator	OPER 1-6, 1-8, 3-1
commands, private volumes	
tasks	
Console Operator Commands	
Console Output	

Echoing	OPER 1-7
	OP33 1-7
	OP44 1-7
Non-echoing	OPER 1-7
	OP33 1-7
	OP44 1-7
Continuation character	CMND 1-4
	SUPR 1-4
CONTINUE command	
example	CMND 2-34
parameters	CMND 2-34
usage	CMND 2-34
Control H	OPER 1-7
CONTROL KEYS switch	OP33 2-7
Control Panel	OPER 2-2
CONTROL SOURCE switch	OP33 2-4
Control-Y traps	INTR 4-38
Conversion Summary	CONV 3-1
Converting characters from ASCII to EBCDIC	INTR 4-13
Converting characters from EBCDIC to ASCII	INTR 4-13
Converting numbers	
from ASCII to binary	INTR 4-13
from ASCII to EBCDIC	INTR 4-13
from binary to ASCII	INTR 4-10
from EBCDIC to ASCII	INTR 4-13
Converting private volumes disc to system disc	OPER 4-27
	OP33 4-29
	OP44 4-29
Converting system disc to private volume disc	OPER 4-27
	OP33 4-29
	OP44 4-29
COOLSTART	OPER 4-22, 5-10, F-1
Coolstart	SUPR 6-58, 6-61
Copy access, for message files	INTR 3-3, 3-8
COPY command, VINIT	SUPR 2-69, I-29
	OP33 D-3
	OP44 D-3
	OPER D-3
COPY function	UTIL 11-6c, 11-6d
Spook	UTIL 11-6c, 11-6d
SADUTIL	UTIL 1-45
COPY segmenter command	SEGM 1-5, 2-13
Corresponding Output device	SUPR 6-7
CPU register codes	OPER C-2
CPU register test	OPER C-1, C-4
CPU RESET switch	OPER 2-1
CPU UTILIZATION field	OP33 2-8
CREATE errors	INTR E-13
CREATE intrinsic	

specifications	INTR 2-21
usage	INTR 7-3
CREATEPROCESS intrinsic	INTR 2-26
errors	INTR E-17
Creating an extra data segment	INTR 8-2
Creating processes	INTR 7-3
CRT terminal	OPER 1-7, 5-33
	OP33 1-7
	OP44 1-7
CS capability	SUPR 2-4, 2-25
CS subqueue	INTR 9-7
changing priority of	SUPR 2-65
definition of	SUPR 2-65
CS/3000 Intrinsics (system failures)	OPER B-14
CST register display	DEBUG 2-13, 2-25, 3-30
CTranslate intrinsic	
specifications	INTR 2-28
usage	INTR 4-13
CURRENT INSTRUCTION REGISTER	OPER 2-3, 5-31
Current time	INTR 4-44
CV (create volume) capability	SUPR 2-4, 2-26, 2-30
D	
D command	
definition	DEBUG 2-11
use	DEBUG 3-11, 3-18
use in privileged mode	DEBUG 3-29
DAScii intrinsic	
specifications	INTR 2-30
usage	INTR 4-13
DATA command	
example	CMND 2-38
operation	CMND 2-36
parameters	CMND 2-36
usage	CMND 2-36
Data Communications	SUPR 6-16
Data from a device option (A)	
definition of	SUPR 6-6
specifying	SUPR 6-84, B-1
Data information	INTR 4-42
Data Mis-Alignment	
COMMON OR EQUIVALENCE Statements	CONV 3-2
Resulting from Intrinsic Calls	CONV 3-3
Through Binary File I/O	CONV 3-3
Data segment index, extra (DST), display	DEBUG 2-13, 3-30
Data segment relative (DA)	
display base	DEBUG 2-11, 3-29, 3-31

freeze	DEBUG 2-17, 3-30
modify	DEBUG 2-19, 3-29
unfreeze	DEBUG 2-26, 3-30
Data Segment Table (DST)	SUPR 6-11, 6-39, 6-48
Data segments	INTR 8-1
changes to limits	SUPR 6-15, 6-48
changing maximum size of	SUPR 6-48
changing the size	INTR 8-15
deleting	INTR 8-15
table (DST)	SUPR 6-11
transferring to and from	INTR 8-15
Data stack finding value in	DEBUG 3-11- 3-15
Data	
Date, how to display	CMND 2-192
DATELINE intrinsic	INTR 2-32
DB	
absolute address	DEBUG 2-11, 2-19
parameter	DEBUG 2-34
pointer	INTR 9-5
register display absolute value of	DEBUG 2-13
relative addressing	CONV 2-6 DEBUG 3-12
DBINARY intrinsic	
specifications	INTR 2-33
usage	INTR 4-13
DDIV Instruction	CONV 3-6
Deadlocks	INTR 7-13
DEALLOCATE	SUPR 2-17, 6-124
DEBUG command, usage	CMND 2-39
DEBUG facility	CONV 2-6
capabilities	DEBUG 1-1
command specifications	DEBUG 2-2
command summary	DEBUG 2-4
execution with	DEBUG 3-5
function	UTIL 11-7
intrinsic	INTR 2-34
intrinsic definition	DEBUG 2-29
intrinsic use	DEBUG 3-21
invoking	CMND 2-39
preparing to use	DEBUG 3-1
privileged mode capability	DEBUG 3-26
standard capability	DEBUG 3-5
Decimal mode	
display	DEBUG 2-11
expression result	DEBUG 2-27
modify	DEBUG 2-19
Decimal value in expression	DEBUG 2-2
Declaring access-mode options for files	INTR 10-91
Defective disc track table	OPER E-1
Defective Track Table	SUPR 6-92 UTIL 1-17

Defining line-termination characters for terminal input :DELETESPOOLFILE command	INTR 5-20 OPER 1-8, 3-15, 4-12 OP33 1-8, 3-15 OP44 1-8, 3-15
Deleting a character	OPER 1-7 OP33 1-7 OP44 1-7
a line	OPER 1-7 OP33 1-7 OP44 1-7
an extra data segment	INTR 8-15
I/O devices	OPER 5-25 OP33 5-23 OP44 5-24
processes	INTR 7-8
Delimiters, parameter	CMND 1-2
Details of program execution	CMND B-1
Determining father process	INTR 7-14
Determining interactive and dup. file pairs	INTR 10-92
Determining process priority and state	INTR 7-15
Determining son processes	INTR 7-15
Determining source of process activation	INTR 7-14
Determining user's access mode attributes	INTR 4-10
Device	
access	INTR 10-7
allocation	INTR 10-26
characteristics	INTR 5-1
Classes	
definition of	SUPR 6-7
specifying	SUPR 6-32, 6-86
Management	OPER 4-33
recognition	OPER 4-1 OP44 4-1
Reference Table (DRT)	SUPR 6-4, 6-22
status, how to display	CMND 2-175, 2-187
sub-type	
specifying for	SUPR 6-23, 6-81, A-1 - A-3, B-1 - B-15
type, specifying for	SUPR 6-3, 6-81, A-1 - A-3, B-1 - B-15
Device-dependent restrictions on files	INTR 10-24
Devicefile management	OPER 4-2 OP33 4-2 OP44 4-2
Devicefiles	
Data	OPER 4-4

definition	OP33 4-4
	OP44 4-4
	OPER 4-3
displaying information for	OP33 4-3
Input	OP44 4-3
	CMND 2-172
	OPER 4-4
	OP33 4-4
	OP44 4-4
input, how to access	CMND 2-175
Job/Session input	OPER 4-4
	OP33 4-4
	OP44 4-4
Job/Session list	OPER 4-6
	OP33 4-6
	OP44 4-6
Operator-assigned	OPER 4-5
	OP33 4-5
	OP44 4-5
Operator involvement with input	OPER 4-5
	OP33 4-5
	OP44 4-5
Operator involvement with output	OPER 4-6
	OP33 4-6
	OP44 4-6
Output	OPER 4-6
	OP33 4-6
	OP44 4-6
output, how to access	CMND 2-187
state	CMND 2-175,2-187
Devices	INTR 10-7
Devices, classification of	INTR 10-25
Device recognition	OPER 4-1
	OP33 4-1
	OP44 4-1
Diagnostic utility system	OP44 5-30
	OP33 5-30
Diagnostician Attribute (DI)	SUPR 3-3
Diagnostics, Micro-programmed	OPER C-1
Diagnostics (Series II)	OPER C-4
Direct-access file reading	INTR 10-49
Direct-access file writing	INTR 10-51
Directory Block Size,changing on a USL file	SEGM 3-23
Directory, changing size of	SUPR 6-45
Directory errors	OPER A-6
	OP33 B-6
	OP44 B-6
Disabling logging	OP44 5-28
	OP33 5-27
	OPER 5-29
Disabling traps	INTR 4-29
:DISALLOW command	OPER 1-8, 3-16

	OP33 1-8, 3-16
	OP44 1-8, 3-16
:DISASSOCIATE command	CMND 2-40
example	OPER 4-33
operation	CMND 2-46
parameters	CMND 2-40
syntax	CMND 2-40
usage	CMND 2-40
Disc	
adding volumes	SUPR 6-46, 6-92
allocation, changing	SUPR 6-2, 6-14, 6-45, 6-92
deleting volumes	SUPR 6-46, 6-92
domains	OPER 4-23, 4-24
	OP33 4-25, 4-26
	SUPR 4-9
	OP44 4-25, 4-26
files, modifying and listing	UTIL 6-1
files, recreating	UTIL 2-1
files, retrieving and copying	UTIL 1-29
fixed-head	SUPR 6-62
listing volumes	SUPR 6-45, 6-46, 6-91, 6-92
moving-head	SUPR 6-62
organization	SUPR 6-63
pack care and handling	OPER E-1
pack formatting	SUPR H-1 - H-3
Private Volumes	OPER 5-22
removable	SUPR 4-9
sector display	SUPR 4-9
serializing	DEBUG 2-15, 3-29
space	OPER 5-32
space utilized by system	INTR 10-2
volume conditioning	SUPR E-1
	OPER 4-29
	OP33 4-32
	OP44 4-32
	SUPR F-6
volume labels	UTIL 6-1 - 6-3
DISKED2	UTIL 6-3
DISKED2 Error Messages	CMND 2-41
DISMOUNT command	SUPR I-16
operation	CMND 2-41
parameters	CMND 2-41
usage	CMND 2-41
Dismounting disc packs	OPER 4-27
	OP33 4-30
	OP44 4-30
Dismounting Private Volumes	OPER 4-31
Display	
base	DEBUG 2-11, 3-30

code	DEBUG 2-11, 3-18
privileged mode	DEBUG 2-11, 3-29
register	DEBUG 2-13, 3-16
stack marker	DEBUG 2-25, 3-20
value	DEBUG 2-11, 3-12
Displaying Accounting information	
Account Manager	SUPR 5-9
System Manager	SUPR 4-5
DL register	
assign value	DEBUG 2-28, 3-17
display	DEBUG 2-14
modify	DEBUG 2-21, 3-16
DLSIZE intrinsic	
specifications	INTR 2-35
usage	INTR 4-22
DL to DB area	INTR 4-22
DMOVIN intrinsic	
specifications	INTR 2-37
usage	INTR 8-15
DMOVOUT intrinsic	
specifications	INTR 2-39
usage	INTR 8-15
DMUL Instruction	CONV 3-6
Domains, disc	SUPR 4-9
Domains, file	INTR 10-7
:DOWN command	OPER 1-8, 3-18
	OP33 1-8, 3-18
	OP44 1-8, 3-18
	OP44 1-8, 3-19
	OP33 1-8, 3-19
	OPER 1-8, 3-19,
	4-14
	UTIL 3-1 - 3-4
	UTIL 3-4
DPAN4	
Entry Point	
DR command	
definition	DEBUG 2-13
use	DEBUG 3-16
use in privileged mode	DEBUG 3-30
Driver Names	
definition of	SUPR 6-7
specifying	SUPR 6-31, 6-85,
	A-1 - A-5,
	B-1 - B-15
DRT entry number	
specifying for a device	SUPR 6-22, 6-69
specifying highest allowed	SUPR 6-22, 6-89
DS attribute	SUPR 3-4
DS subqueue	INTR 9-7
changing priority of	SUPR 6-47
definition of	SUPR 6-65, 2-68
DS/3000	SUPR 6-16, A-3,
	A-5

DS/3000 (System failures)	OPER B-14
DS/3000 subsystem, closing a line	CMND 2-44
DS/3000 subsystem, opening a line	CMND 2-44
DS/3000 subsystem, remote hello	CMND 2-129
:DSCONTROL command	OP44 1-7, 3-20
	OP33 1-7, 3-20
	OPER 1-8, 3-20
DSCOPY	CMND 2-41
copy discfiles	CMND 2-42
example	CMND 2-43
operation	CMND 2-42
parameters	CMND 2-42
syntax	CMND 2-42
usage	CMND 2-43
DSLIN command	OPER 1-8, 3-20
	CMND 2-44
example	CMND 2-46
operation	CMND 2-46
parameters	CMND 2-44
syntax	CMND 2-44
DST register display	DEBUG 2-13, 3-30
DSTAT command	OPER D-4, 4-31
	SUPR I-17
	CMND 2-47
example	CMND 2-47
operation	CMND 2-47
parameters	CMND 2-47
usage	CMND 2-47
VINIT	SUPR I-30
DTRACK command, VINIT	SUPR I-15
	OPER D-9
	OP33 D-10
	OP44 D-10
	OP44 2-3
DUMP key on System Console	OP33 2-9
Dump main memory	OP44 5-30, E-1
	OP33 5-29
Dump procedure	OPER 5-31
	OP33 5-29
	OP44 5-30, E-1
Dump, Software Facility	OP44 E-1
	OP33 E-1
Dump stack	DEBUG 2-35, 4-8
DUMP switch	OP33 2-3
Dumping Files offline	SUPR 6-117
Duplex mode	INTR 5-11
Duplicative file pairs	INTR 10-92
Duplicative option (D)	
definition of	SUPR 6-6
specifying	SUPR 6-30, 6-85,
	B-1 - B-15
DV command	

definition	DEBUG 2-15
use	DEBUG 3-29
DX register display	DEBUG 2-13, 3-30
Dynamic load and unload of library procedures	INTR 4-2

E

E command	
definition	DEBUG 2-16
use	DEBUG 3-9
EA register display	DEBUG 2-13, 3-30
Echoing console output	OPER 1-7
EDIT Function	UTIL 1-15
Editing commands	CMND 2-122
EDITOR command	
example	CMND 2-49
operation	CMND 2-48
parameters	CMND 2-48
usage	CMND 2-48
Effective Use of User Logging	INTR 10-96
ELSE command	
example	CMND 2-50
operation	CMND 2-50
usage	CMND 2-50
Enable and disable	
binary transfers	INTR 5-21
line deletion echo suppress	INTR 5-23
logging	OP44 5-28
	OP33 5-27
parity checking	INTR 5-14
subsystem break function	INTR 5-13
system break function	INTR 5-14
tape-mode option	INTR 5-15
terminal input timer	INTR 5-16
user block transfers	INTR 5-22
ENABLE switch	OPER 2-3
Enabling logging	OP44 5-28
	OPER 5-29
Enabling private volumes	OPER 4-30
Enabling traps	INTR 4-29
End-of-data	CMND 2-48
End-of-file	CMND 2-55
Checking	CONV 2-3
indication	INTR 5-6
indicators	CMND 2-53
marks on magnetic tape	INTR 10-72
End-of-job	CMND 2-56
ENDIF command	CMND 2-51
example	CMND 2-51
operation	CMND 2-51
usage	CMND 2-51

Entering non-privileged mode	INTR 9-5
Entering privileged mode	INTR 9-3
Entry Points	
activating	SEGM 3-8
deactivating	SEGM 3-10
deleting from a RL	SEGM 3-13, 3-15, 3-16
deleting from a SL	SEGM 3-19
EOD command	
example	CMND 2-54
operation	CMND 2-52
usage	CMND 2-52
EOF command	
example	CMND 2-55
operation	CMND 2-55
usage	CMND 2-55
EOF Mark	UTIL 1-26
EOJ command	CMND 2-56
example	CMND 2-56
operation	CMND 9-56
usage	CMND 2-56
EQUIVALENCE Statement	CONV 3-2
Error analysis	OPER B-3
	OP33 C-2
	OP44 C-2
	OPER 6-61
Error codes, irrecoverable communication	
Error handling	
during a session	CMND 1-4, 2-35
during job entry	CMND 2-35
in a batch job	CMND 1-4
in a command	CMND 1-4
in user-defined commands	CMND 3-13
in a session	CMND 1-4
Error messages	DEBUG 5-1
Cold Load	OPER A-1
Command Interpreter	OPER 6-8
Console	OPER 6-1, 6-26
Segmenter	SEGM 4-1 - 4-5
Error-check procedure	INTR 10-45
Errors	
ACTIVATE errors	INTR E-13
command	CMND 1-4
condition code	INTR 1-10, 10-12
CREATE errors	INTR E-13
CREATEPROCESS errors	INTR E-17
file information display	INTR E-20
file system errors	INTR E-8
in user-defined commands	CMND 3-13
intrinsic errors	INTR E-6
loader errors	INTR E-12
LOCKGLORIN errors	INTR E-13
MYCOMMAND errors	INTR E-13

obtaining file error information	INTR 10-68
operator messages	INTR E-18
program errors	INTR E-5
recovery from	SUPR 6-62
run-time errors	INTR E-7
run-time messages	INTR E-2
SUSPEND errors	INTR E-13
system messages	INTR E-18
user messages	INTR E-18
writing an error-check procedure	INTR 10-45
ES subqueue	INTR 9-7
Executing MPE commands programmatically	SUPR 2-65 - 2-68
EXIT command (VINIT)	INTR 4-9
	OP44 D-10
	OP33 D-10
	OPER D-7
	SUPR 2-69, I-34,
	I-35
EXIT Function	UTIL 11-9
EXIT segmenter command	SEGM 1-5, 2-14
Expanded Console Capabilities, Managing	SUPR 4-14
EXPANDUSLF intrinsic	SEGM 1-5, 2-15,
	2-16
	INTR 2-41
	CONV 3-4
Explicit Addressing	
Expressions	
calculation of	
use in DEBUG commands	DEBUG 2-27, 3-17
Extended absolute relative (EA)	DEBUG 2-2
display base	
modify base	DEBUG 2-11, 3-29
Extended precision floating-point traps	DEBUG 2-19
Extents	INTR 4-31
Extra data segment	INTR 10-2
Extra Data Segment (DS) Attribute	INTR 8-2
Extra data segment index (DST) display	SUPR 3-3
Extract bit field in expression	DEBUG 2-13, 3-30
	DEBUG 2-2

F

F command	
definition	
use	DEBUG 2-17
FATHER intrinsic	DEBUG 3-30
specifications	
usage	INTR 2-43
Father process	INTR 7-14
FCARD intrinsic	INTR 7-3
specifications	
usage	INTR 2-44
FCHECK intrinsic	INTR 5-28

specifications	INTR 2-48
usage	INTR 10-69
FCLOSE intrinsic	
specifications	INTR 2-54
usage	INTR 10-38
FCLOSE with magnetic tape files	INTR 10-73
FCONTROL intrinsic	
options	CONV 2-5
specifications	INTR 2-57
usage	INTR 5-1, 10-79
FDELETE intrinsic	INTR 2-61
specifications	INTR 2-61
usage	INTR 10-9
FERRMSG intrinsic	INTR 2-62
usage	INTR 10-69
FFILEINFO intrinsic	
specifications	INTR 2-63
usage	INTR 10-68
FGETINFO intrinsic	
specifications	INTR 2-65
usage	INTR 10-66
Field, sequence	CONV 2-5
File and system back-up operation	OP44 5-25
	OP33 5-24
File Codes	CMND 2-32, 2-62
FILE command	CMND 2-58
access parameters	CMND 2-64
devicespec parameters	CMND 2-60
disposition parameters	CMND 2-67
example	CMND 2-68
implicit, for subsystems	CMND 2-67
namespec parameters	CMND 2-58
operation	CMND 2-67
parameters	CMND 2-58
syntax	CMND 2-58
syntax for access	CMND 2-64
syntax for devicespec	CMND 2-60
syntax for disposition	CMND 2-66
syntax for namespec	CMND 2-58
File accessing	INTR 10-12, 10-17
File characteristics	INTR 10-2
File control operations	INTR 10-90
File designators	INTR 10-10
File designator, subsystem formal	CMND B-1
File-device relationships	INTR 10-7
File domains	INTR 10-7
File error information	INTR 10-68
File information display	INTR E-20
File label	INTR 10-8
File management system	INTR 10-1
File marks on magnetic tape	INTR 10-72
File numbers	INTR 10-12

Files

access attributes	OP44 4-2
access information	OP33 4-2
access parameters	OPER 4-2
accessing	SUPR 3-3
altering security on	INTR 10-66
and system back-up operation	CMND 2-64
arbitrary formal designator	INTR 10-8
attributes, how to specify	CMND 2-10
back referencing	OPER 5-26
back-up of	CMND 2-58
block factor	INTR 10-10
block size	SUPR 6-54, 6-116
blocks	INTR 10-3
buffered	INTR 10-4
characteristics	INTR 10-2
closing	INTR 2-63
condition codes	INTR 10-2
control	INTR 10-39
creating	INTR 10-12
declaring access-mode options	INTR 10-90
designators	CMND 2-58
device	INTR 10-91
device relationships	INTR 10-8
disc	CMND 2-58
domains	INTR 10-7
duplicative pairs	INTR 10-2
dumping off-line	INTR 10-7
error-check procedure	INTR 10-92
error information	SUPR 6-117
example	INTR 10-45
extents	INTR 10-68
file information display	CMND 2-68
file management system	INTR 10-2
fixed-length records	INTR 10-14
foreign disc facility	INTR 10-1
	INTR 10-3
	INTR 10-32,10-47
	10-49,10-50
	10-51
formal designator, resetting	CMND 2-113
how to dump	CMND 2-201
how to restore	CMND 2-140
how to use	INTR 10-17
information display	INTR E-20
interactive pairs	INTR 10-92
label	INTR 10-8
level security	SUPR 3-14
listing of	SUPR 4-8
locking and unlocking	INTR 10-55
logical records	INTR 10-2
magnetic tape	INTR 10-69

Management System

marks on magnetic tape	CONV 2-5, 2-6
Modifying and Listing Disc Files	INTR 10-1
multiple access	INTR 10-72
\$NEWPASS	UTIL 6-1
no-wait I/Q	INTR 10-12,10-13
non-sharables devices	INTR 10-10
\$NULL	INTR 10-59,10-60
numbers	INTR 10-15
\$OLDPASS	INTR 10-10
opening	INTR 10-12
on non-sharable devices	INTR 10-11
parameters	INTR 10-27
permanent	INTR 10-50
physical records	CMND 2-58
pointer	INTR 10-14,10-40
Program Files	INTR 10-2
reading	INTR 10-91
record formats	UTIL 9-1
records	INTR 10-47,10-49
Recreating Disc Files	INTR 10-3
relative I/O	INTR 10-2
renaming	UTIL 2-1
restoring	INTR 10-6,10-8
restoring security to	INTR 10-43
restoring to system	CMND 2-132
Retrieving and Copying Disc Files	OPER 5-28
retrieving dumped	CMND 2-10
sectors	CMND 2-140
security	UTIL 1-29
security, suspending	SUPR 6-121
Segmented Library(SL) Files	INTR 10-2
shared, special considerations	SUPR 3-10, 3-11
spooling	CMND 2-10
\$STDIN	CMND 2-124
\$STDINX	UTIL 10-1
\$STDLIST	INTR 10-16
storing	INTR 10-23
system defined	INTR 10-9
system (system failures)	INTR 10-9
temporary	OPER B-11
types	OP33 C-10
undefined-length records	OP44 C-4
unlocking	INTR 10-7
updating	INTR 10-8
user labels	INTR 10-3
	INTR 10-55
	INTR 10-57
	INTR 10-62

user logging	INTR 10-93
using	INTR 10-17
variable-length records	INTR 10-3
writing	INTR 10-49,10-50
File storage	SUPR 6-2
File system condition codes	INTR 10-12
File system errors	INTR E-8
File types	INTR 10-8
FIND Function	UTIL 11-11,11-12
FINDJCW intrinsic	
specifications	INTR 2-74
usage	INTR 4-47
Fixed-head disc	SUPR 6-62
Fixed-length records	INTR 10-3
FLOCK intrinsic	
specifications	INTR 2-75
usage	INTR 10-55
FMTCALENDAR intrinsic	
specifications	INTR 2-77
usage	INTR 4-45
FMTCLOCK intrinsic	
specifications	INTR 2-78
usage	INTR 4-45
FMTDATE intrinsic	
specifications	INTR 2-79
usage	INTR 4-45
FOPEN Intrinsic	CONV 2-3, 2-5,
	3-4
specifications	INTR 2-80
usage	INTR 10-26
foptions	
bit summary	INTR 2-49
description	INTR 2-58
:FOREIGN command	OP44 1-8, 3-23
	OP33 1-7, 3-23
	OPER 1-8, 3-23
	OPER D-2
	OP44 1-3, 4-35
	OP33 1-3, 4-35
	OPER 1-3, 4-32
	INTR 10-32,10-37
	10-49,10-50
	10-51
Formal file designator	INTR 10-8
used by subsystems	CMND 2-67
FORMAT command, VINIT	SUPR 2-69, I-28
	OPER D-2
	OP33 D-2
	OP44 D-2
	SUPR D-1
Formats, listing	SUPR F-1 - F-8
Formats, miscellaneous	INTR 4-45
Formatting Calendar date and time	

Formatting command parameters	INTR 4-4
Formatting disc packs	OPER 5-22
	OP33 5-31
	SUPR H-1 - H-4
	OP44 5-32
Forms, changing on a line printer	OPER 5-21
Forms message	OPER 4-13
	OP33 4-13
	OP44 4-14
FORTGO command	CMND 2-69
example	CMND 2-70
parameters	CMND 2-69
usage	CMND 2-69
FORTPREP command	CMND 2-71
example	CMND 2-72
operation	CMND 2-72
parameters	CMND 2-71
syntax	CMND 2-71
usage	CMND 2-72
FORTTRAN	CONV 3-2
FORTTRAN command	CMND 2-73
example	CMND 2-74
operation	CMND 2-74
parameters	CMND 2-73
syntax	CMND 2-73
usage	CMND 2-74
FORTTRAN programs	
compiling	CMND 2-69, 2-71
executing	CMND 2-69
preparing	CMND 2-69, 2-71
FPOINT intrinsic	
specifications	INTR 2-94
usage	INTR 10-9
FREAD and FWRITE for \$STDIN and \$STDLIST	INTR 10-35
FREAD for magnetic tape files	INTR 10-71
FREAD intrinsic	
specifications	INTR 2-95
usage	INTR 10-47
FREADBACKWARD intrinsic	INTR 2-97
FREADDIR intrinsic	
specifications	INTR 2-99
usage	INTR 10-49
FREADLABEL intrinsic	
specifications	INTR 2-101
usage	INTR 10-63
FREADSEEK intrinsic	
specifications	INTR 2-102
usage	INTR 10-52
Free-Space Table	UTIL 7-1
FREE2	UTIL 7-1, 7-2
FREEDSEG intrinsic	
specifications	INTR 2-103

usage	INTR 8-15
Freeing local RIN's	INTR 6-9
FRELOCRIN intrinsic	
specifications	INTR 2-104
usage	INTR 6-9
FREERIN command	
example	CMND 2-75
parameters	CMND 2-75
syntax	CMND 2-75
usage	CMND 2-75
Freezing segments	DEBUG 2-17, 3-30
FRELATE intrinsic	
specifications	INTR 2-105
usage	INTR 10-92
FRENAME intrinsic	
specifications	INTR 2-107
usage	INTR 10-43
Front panel	OP44 2-2, 2-3
	OP33 2-5
FSETMODE intrinsic	
specifications	INTR 2-109
usage	INTR 10-91
FSPACE intrinsic	
specifications	INTR 2-111
usage	INTR 10-89
Functional return	INTR 2-2
Functions of a console operator	OP44 5-1
	OP33 5-1
FUNLOCK intrinsic	
specifications	INTR 2-113
usage	INTR 10-56
FUPDATE intrinsic	
specifications	INTR 2-114
usage	INTR 10-58
FWRITE and FREAD for \$STDLIST and \$STDIN	INTR 10-35
FWRITE for magnetic tape files	INTR 10-71
FWRITE intrinsic	
specifications	INTR 2-115
usage	INTR 10-48
FWRITEDIR intrinsic	
specifications	INTR 2-120
usage	INTR 10-53
FWRITELABEL intrinsic	
specifications	INTR 2-122
usage	INTR 10-64

G

GENMESSAGE intrinsic	
specifications	INTR 2-123
usage	INTR 4-50

GET intrinsic	INTR 2-126
GETDSEG intrinsic	
specifications	INTR 2-127
usage	INTR 8-6
GETJCW intrinsic	
specifications	INTR 2-129
usage	INTR 4-46
GETLOCRIN intrinsic	
specifications	INTR 2-130
usage	INTR 6-8
GETLOG command	CMND 2-76
example	CMND 2-77
operation	CMND 2-76
parameters	CMND 2-76
usage	CMND 2-76
GETORIGIN intrinsic	
specifications	INTR 2-131
usage	INTR 7-14
GETPRIORITY intrinsic	
specifications	INTR 2-132
usage	INTR 7-13
GETPRIVMODE intrinsic	
specifications	INTR 2-134
usage	INTR 9-3
GETPROCID intrinsic	
specifications	INTR 2-135
usage	INTR 7-15
GETPROCINFO intrinsic	
specifications	INTR 2-136
usage	INTR 7-15
GETRIN command	CMND 2-78
example	INTR 6-2
parameters	CMND 2-79
usage	CMND 2-78
GETUSERMODE intrinsic	CMND 2-78
specifications	INTR 2-138
usage	INTR 9-5
GIVE command	OPER 1-8, 3-24
	OP33 1-8, 3-24
	OP44 1-8, 3-24
	DEBUG 2-5, 3-28
Global breakpoint	
Global multiaccess	
for circular files	INTR 3-10
for message files	INTR 3-3, 3-6
Global RIN	INTR 6-2
changing number available	SUPR 6-13, 6-40
deleting	SUPR 6-41
how to free	CMND 2-75
listing of	SUPR 6-41
Global Variables	SEGM 1-4
Group	

assigning private volume set	SUPR I-11
attributes	SUPR 3-2, 5-9
definition of	SUPR 3-6, 5-3, 5-4
deleting from private volume set	SUPR 5-7
level security	SUPR 3-13
moving to private volume set	SUPR I-12
name	SUPR 3-6
name	CMND 2-82
Librarian (GL)	
Librarian (GL) attribute	SUPR 3-3
Librarian (GL) creation of	SUPR 5-8
passwords	CMND 2-83
Reports	SUPR 5-9
segmented library break in	DEBUG 2-6, 6-23
segmented library clear break in	DEBUG 2-9
segmented library display location of	DEBUG 2-25

H

Halt Instructions (System failures)	OPER B-1
HALT light	OP44 2-3, 2-4
	OP33 2-3, 2-6
Hand-shaking arrangement	INTR 6-1
Hardcopy terminals	OPER 1-7
	OP33 1-6
	OP44 1-7
Hardware Configuration	CONV 2-7
Hardware halts	OPER A-6
	OP33 B-6 - B-8
	OP44 B-7, B-8
Hardware Serial Interface	
configuration summary	SUPR B-11
HEADOFF command	OPER 1-8, 3-25
	OP33 1-8, 3-25
	OP44 1-8, 3-25
HEADON command	OPER 1-8, 3-26
	OP33 1-8, 3-26
	OP44 1-8, 3-26
HELLO command	CMND 2-80
example	CMND 2-84
operation	CMND 2-82
parameters	CMND 2-80
syntax	CMND 2-80
usage	CMND 2-81
HELP command	
example	CMND 2-88
operation	CMND 2-87
parameters	CMND 2-85
syntax	CMND 2-85
usage	CMND 2-87

HELP command (Vinit)	OPER D-10
HELP Function	SUPR 2-69, I-35
Help subsystem	UTIL 11-12a
accessing	CMND 2-85
Catalog	CMND 2-85
Hexidecimal mode display	SUPR G-2
HIDE segmenter command	DEBUG 2-12, 2-27
Home group	SEGM 1-5, 2-17
Home volume set	SUPR 3-6
How to use files	SUPR 4-10, I-2
How user logging works	INTR 10-17
HP 2608 VFC (Vertical Format Control)	INTR 10-94
HP 3000 Series 30/33 Systems Controls and Indicators	OPER 4-14
HP 3000 Series 44 Systems Controls and Indicators and CMP	OP33 2-1
HP 3000 System Control Panel	OP44 2-1
HSI (Hardware Serial Interface), configuration summary	OPER 2-1
	SUPR B-11

I

I prefix	
= command	DEBUG 2-27
D command	DEBUG 2-12
M command	DEBUG 2-20
I/O devices	
adding	OPER 5-24
deleting	OPER 5-25
I/O messages	OPER 6-2
I/O system (system failure)	OPER B-9
I/O test	OPER C-4, C-5
IBM 2741 Terminals	CONV 2-4
Identifying Local Rin owners	INTR 6-9
IF block termination	CMND 2-51
IF command	CMND 2-89
example	CMND 2-90
operation	CMND 2-90
parameters	CMND 2-89
usage	CMND 2-89
IF statement alternative (ELSE)	CMND 2-89
IMAGE	CONV 3-10
IML Command	
example	CMND 2-92
parameters	CMND 2-91
syntax	CMND 2-91
usage	CMND 2-92
:IMLCONTROL command	OP44 1-8, 3-27
	OP33 1-8, 3-27

:IMLMRG	OPER 1-8, 3-27
Implementing Private Volumes	SUPR 2-18
Indirect addressing	OPER 4-29
Information Block Size, changing on a USL file	DEBUG 3-12
INIT command, VINIT	SEGM 3-23
	SUPR 2-69, I-27
	OPER D-1
	OP33 D-1
	OP44 D-1
Initialization, serial disc	SUPR J-1
Initiator/User dialogue	SUPR 6-69 -6-103
INITUSLF intrinsic	INTR 2-137
	SEGM 1-5, 2-18,
	2-19
INP (Intelligent Network Processor), configuration summary	SUPR B-14
Input devicefiles	OPER 4-4
	OP33 4-5
	OP44 4-5
Input devicefiles, displaying status	CMND 2-172
Input echo facility	INTR 5-11
INPUT Function	UTIL 11-12, 11-14
Input spooling	OPER 4-7, 4-8
	OP33 4-7, 4-8
	OP44 4-7, 4-8
control	OPER 4-9 - 4-11
	OP33 4-9 - 4-11
	OP44 4-9 - 4-11
Input stream, end-of-data	CMND 2-58
Input stream, end-of-file	CMND 2-55
Input/output devices	INTR 4-16
changing configuration of	SUPR 6-4, 6-19,
	6-62
definition of	SUPR 6-19, 6-62
listing of	SUPR 6-20, 6-79
Input/output files	INTR 10-11
Input/Output Queue (IOQ)	SUPR 6-11, 6-39
INPUT/OUTPUT System	CONV 2-5, 2-6
Intelligent Network Processor (INP), configuration summary	SUPR B-14
Inter-job level RIN's	INTR 6-2
Inter-process level RIN's	INTR 6-6
Inter-record gap	INTR 10-76
Interactive Access (IA) Attribute	SUPR 3-5
Interactive file pairs	INTR 10-92
Interactive option (I) definition of	SUPR 6-6
specifying	SUPR 6-30, 6-85,
	B-1 - B-15
Interactive processing	OPER 1-1
	OP33 1-1
	OP44 1-1

Interactive session using SETDUMP in	DEBUG 4-3
Internal Flags, setting RBM	SEGM 3-19, 3-22
Internal operations for file accessing	INTR 10-17
Interpreting BASIC programs	CMND 2-14
Interprocess Communication (IPC)	INTR 3-1 - 3-21
additional features	INTR 3-2
examples	INTR 3-12
features of intrinsics	INTR 3-5
operation	INTR 3-1
using	INTR 3-3
Interrupt Control Stack (ICS)	SUPR 6-13
Intrinsic	
calling from other languages	INTR 1-10
calling from SPL	INTR 1-2
Calls	CONV 3-3
declaration	INTR 1-2
definition	INTR 1-1
Deleted	CONV 2-2
error definitions	INTR 1-10
error messages	INTR E-1
errors	INTR 10-6
New	CONV 2-2
Options, FCONTROL	CONV 2-5
purposes	INTR 1-1
specification of	DEBUG 2-3
summary	DEBUG 2-30
	INTR 1-3
	INTR 2-2
types	SEGM 1-5, 2-2,
Intrinsics	2-6, 2-7
	SEGM 2-15, 2-16,
	2-18
	SEGM 2-19
	INTR 2-4
	INTR 2-5, 8-10
	INTR 2-7
	SEGM 1-5, 2-6,
	2-7
	INTR 2-9, 8-16
	INTR 2-11, 4-30
	INTR 2-12, 4-10
	INTR 2-14, 4-13
	INTR 2-15, 4-44
	INTR 2-16, 4-19
	INTR 2-17
	INTR 2-18, 4-44
	INTR 2-19
	INTR 2-20, 4-9
	INTR 2-21, 7-3
	INTR 2-26
	INTR 2-28, 4-13
	INTR 2-30, 4-13
ACCEPT	
ACTIVATE	
ADJUSTUSLF	
ALTDSEG	
ARITRAP	
ASCII	
BINARY	
CALENDAR	
CAUSEBREAK	
CLEANUSL	
CLOCK	
CLOSELOG	
COMMAND	
CREATE	
CREATEPROCESS	
CTRANSLATE	
DASCII	

DATELINE	INTR 2-32
DBINARY	INTR 2-33, 4-13
DEBUG	INTR 2-34
DLSIZE	INTR 2-35, 4-22
DMOVIN	INTR 2-37, 8-15
DMOVOUT	INTR 2-39, 8-15
EXPANDUSLF	INTR 2-41
	SEGM 1-5, 2-15,
	2-16
FATHER	INTR 2-43, 7-14
FCARD	INTR 2-43, 5-28
FCHECK	INTR 2-44, 2-48,
	10-70
FCLOSE	INTR 2-54, 10-73
FCONTROL	INTR 2-57, 5-1,
	10-79
FDELETE	INTR 2-61, 10-9
FERRMSG	INTR 2-62, 10-69
FFILEINFO	INTR 2-63, 10-68
FGETINFO	INTR 2-65, 10-66
FINDJCW	INTR 2-74, 4-47
FLOCK	INTR 2-75, 10-55
FMTCALENDAR	INTR 2-77, 4-45
FMTCLOCK	INTR 2-78, 4-45
FMTDATE	INTR 2-79, 4-45
FOPEN	INTR 2-80, 10-25
	CONV 2-3, 2-5,
	3-4
for Interprocess Communication	INTR 3-5
for Circular Files	INTR 3-10
FPOINT	INTR 2-94, 10-9
FREAD	INTR 2-95, 10-47
FREADBACKWARD	INTR 2-97
FREADDIR	INTR 2-99, 10-49
FREADLABEL	INTR 2-101,
	10-49
FREADSEEK	INTR 2-103,
	10-52
FREEDSEG	INTR 2-103, 8-15
FREELOCRIN	INTR 2-104, 6-9
FRELATE	INTR 2-105,
	10-92
FRENAME	INTR 2-107,
	10-43
FSETMODE	INTR 2-109,
	10-91
FSPACE	INTR 2-111,
	10-89
FUNLOCK	INTR 2-113,
	10-56
FUPDATE	INTR 2-114,
	10-58

FWRITE	INTR 2-115, 10-48
FWRITEDIR	INTR 2-120, 10-53
FWRITELABEL	INTR 2-122, 10-64
GENMESSAGE	INTR 2-123, 4-50
GET	INTR 2-126
GETDSEG	INTR 2-127, 8-6
GETJCW	INTR 2-129, 4-46
GETLOCRIN	INTR 2-130, 6-8
GETORIGIN	INTR 2-131, 7-14
GETPRIORITY	INTR 2-132, 7-13
GETPRIVMODE	INTR 2-134, 9-3
GETPROCID	INTR 2-135, 7-15
GETPROCINFO	INTR 2-136, 7-15
GETUSERMODE	INTR 2-138, 9-5
INITUSLF	INTR 2-125
	SEGM 1-5, 2-18, 2-19
IODONTWAIT	INTR 2-140, 10-62
IOWAIT	INTR 2-142, 10-59
KILL	INTR 2-144, 7-8
LOADPROC	INTR 2-145, 4-2
LOCKGLORIN	INTR 2-146, 6-3
LOCKLOCRIN	INTR 2-148, 6-8
LOCRINOWNER	INTR 2-150, 6-9
MAIL	INTR 2-151, 7-10
MYCOMMAND	INTR 2-153, 4-4
OPENLOG	INTR 2-156, 3-94
PAUSE	INTR 2-157, 4-19
PCHECK	INTR 2-158
PCLOSE	INTR 2-159
PCONTROL	INTR 2-160
POPEN	INTR 2-161
PREAD	INTR 2-162
PRINT	INTR 2-163, 4-16
	CONV 2-2
PRINTFILEINFO	INTR 2-164, 10-45, 10-47
PRINTOP	INTR 2-165, 4-18
PRINTOPREPLY	INTR 2-166, 4-18
PROCTIME	INTR 2-168, 4-44
PTAPE	INTR 2-169, 5-27
PUTJCW	INTR 2-170, 4-47
PWRITE	INTR 2-171
QUIT	INTR 2-172, 4-20
QUITPROG	INTR 2-173, 4-22
READ	INTR 2-174, 4-16
READX	INTR 2-175, 4-16

RECEIVEMAIL	INTR 2-176, 7-12
REJECT	INTR 2-178
RESETCONTROL	INTR 2-179, 4-40
RESETDUMP	INTR 2-180
SEARCH	INTR 2-181, 4-3
SENDMAIL	INTR 2-182, 7-11
SETDUMP	INTR 2-183
SETJCW	INTR 2-185, 4-46
STACKDUMP	INTR 2-186
SUSPEND	INTR 2-188, 7-8
SWITCHDB	INTR 2-189, 9-5
TERMINATE	INTR 2-190, 4-20
TIMER	INTR 2-191, 4-42
UNLOADPROC	INTR 2-192, 4-3
UNLOCKGLORIN	INTR 2-193, 6-3
UNLOCKLOCRIN	INTR 2-194, 6-8
WHO	INTR 2-195, 4-10
WRITELOG	INTR 2-198,
	10-94
XARITRAP	INTR 2-199, 4-32
XCONTRAP	INTR 2-201, 4-41
XLIBTRAP	INTR 2-202, 4-35
XSYSTRAP	INTR 2-203, 4-36
ZSIZE	INTR 2-204, 4-27
Introduction to device management	OP44 4-2, 4-3
	OP33 4-2, 4-3
	OPER 4-2, 4-3
I/O System (system failure)	OP44 C-8
	OP33 C-8
Invoking commands programmatically	SUPR 1-4
IODONTWAIT intrinsic	
specification	INTR 2-140
usage	INTR 10-62
IOWAIT	CONV 2-6
IOWAIT intrinsic	
specification	INTR 2-142
usage	INTR 10-59
IPC - See Interprocess Communication	
Irrecoverable communication error codes	OPER 6-6
Issue FREAD & FWRITE calls for \$STDIN & \$STDLIST	INTR 10-35

J

JCW	
current state	CMND 2-179
displaying status of	CMND 2-179
setting the value of	CMND 2-167
Job	
changing default CPU time-limit for	SUPR 6-42
changing max. no. of concurrent allowed	SUPR 6-42
errors, overriding	CMND 2-35

main process	INTR 7-1
name, in JOB command	CMND 2-93
or session file domains	INTR 10-7
output, controlling	CMND 2-94
scheduler	OPER 4-1
	OP33 4-1
status, displaying	CMND 2-180
streaming	CMND 2-205
submitting from a session	CMND 2-95
temporary file directory	INTR 10-20
time-limit for	SUPR 6-42
using SETDUMP in	DEBUG 4-6
JOB command	CMND 2-93
example	CMND 2-96
operation	CMND 2-95
parameters	CMND 2-93
usage	CMND 2-95
Job control cards, reading	OPER 5-20
Job control words	INTR 4-47
See also JCW	
Job scheduler	OP44 4-1
	OP33 4-1
Job/Session evolution	OPER 4-1
	OP33 4-1
	OP44 4-1
	INTR 4-16
Job/session input/output devices	
Job/session input stream option (J)	
definition of	SUPR 6-5
specifying	SUPR 6-84,
	B-1 - B-15
Job/Session priority request	SUPR 4-8, 6-127
:JOBFENCE command	OPER 1-8, 3-29
	OP33 1-8, 3-29
	OP44 1-8, 3-29
JOBPRI	SUPR 2-19
:JOBSECURITY command	OP44 3-30
	OP33 3-30
	OPER 1-8, 3-30
Julian calendar	INTR 8-8
K	
Keys, terminal	INTR 5-9
Keyword parameters	CMND 1-4, 2-4
KILL Function	UTIL 11-14a
KILL intrinsic	
specifications	INTR 2-144
usage	INTR 7-8

L

L command	
definition	DEBUG 2-18
use	DEBUG 3-9
use in privileged mode	DEBUG 3-28
Label map	DEBUG 3-2
LABEL parameter	
listing	DEBUG 3-2
use	DEBUG 3-1
Labeled magnetic tapefile	
opening	INTR 10-81
reading	INTR 10-87
writing	INTR 10-84
LCST register	
display	DEBUG 2-13, 2-25
stack analysis	DEBUG 4-1, 4-2
:LDISMOUNT	OPER 1-8, 3-31
	OP33 1-9, 3-31
	OP44 1-8, 3-31
Leading colon	SUPR 1-2
LIB parameter	SEGM 1-3
Library	
Group	SEGM 1-3
procedures	INTR 4-2
Public	SEGM 1-2, 1-3
Relocatable	SEGM 1-1,
	3-10 - 3-16
Segmented	SEGM 1-2,
	3-16 - 3-19
System	SEGM 1-2, 1-3
traps	INTR 4-34
:LIMIT command	OPER 1-8, 3-32
	OP33 1-8, 3-32
	OP44 1-8, 3-32
Line deletion echo suppression	INTR 5-23
Line printer	INTR 5-3
Line printer and terminal carriage-control codes	INTR 5-6
Line printer display to	DEBUG 2-18, 3-9,
	3-28
Line-termination characters for terminal input	INTR 5-20
Linear subqueue	INTR 9-5
LIST Function	UTIL 11-15, 11-16
LIST option (UDC declaration)	CMND 3-6
LISTACCT	SUPR 2-20, 4-4
format	SUPR D-1
LISTDIR2	UTIL 8-1 - 8-10
LISTDIR2 Command Examples	UTIL 8-5
LISTEQ2	UTIL 5-1
LISTF command	CMND 2-97
example	CMND 2-101
operation	CMND 2-99

parameters	CMND 2-97
usage	CMND 2-99
LISTGROUP	SUPR 2-22, 4-4
format	SUPR D-4
Listing formats	SUPR D-1
LISTLOG command	CMND 2-104
example	CMND 2-104
operation	CMND 2-104
parameters	CMND 2-104
syntax	CMND 2-104
usage	CMND 2-104
LISTLOG2	UTIL 4-1
LISTRL segmenter command	SEGM 1-5, 2-20
	SEGM 1-5, 2-21
	SUPR 2-24, 4-4
	SUPR D-7
LISTUSER	SEGM 1-5, 2-22
format	SUPR I-16
LISTUSL segmenter command	CMND 2-107
LISTVS command	CMND 2-107
example	CMND 2-105
operation	CMND 2-106
parameters	OPER 1-8, 3-33
usage	OP33 1-9, 3-33
LMOUNT command	OP44 1-8, 3-33
	OP33 2-9
	SUPR 6-79, 6-104
	OPER 2-3
	OP33 2-3
	OP44 2-3
	INTR E-12
	OP33 5-39
	INTR 4-2
	INTR 2-145
	INTR 4-2
	SUPR 3-5
	INTR 6-6
	INTR E-13
	INTR 2-132
	INTR 6-3
	INTR 10-56
	INTR 6-3
	INTR 6-8
	INTR 2-148
	INTR 6-8
	INTR 2-151
	INTR 6-9
LOAD key in system console	
Load Map	
LOAD/DUMP switch	
Loader errors	
Loading a flexible disc	
Loading library procedures	
LOADPROC intrinsic	
specifications	
usage	
Local attributes	
Local RIN's	
LOCKGLORIN errors	
LOCKGLORIN intrinsic	
LOCKGLORIN intrinsic	
specifications	
usage	
Locking and unlocking files	
Locking and unlocking global RIN's	
Locking and unlocking local RIN's	
LOCKLOCRIN intrinsic	
specifications	
usage	
LOCRINOWNER intrinsic	
specifications	
usage	

:LOG command	OPER 1-8, 3-35
	OP33 1-9, 3-35
	OP44 1-8, 3-35
Log File	
changing elements being written to	SUPR 6-14
changing size of	SUPR 6-14, 6-45
changing size of records	SUPR 6-14, 6-44
commands	SUPR 6-130
configurable characteristics	SUPR 6-130
definition of	SUPR 6-128
errors	SUPR 6-130,
	6-153
format	SUPR 6-128
messages	SUPR 6-151
records	SUPR 6-131
security	SUPR 6-130
Log Records	
error	SUPR 6-133
file close	SUPR 6-139
format	SUPR 6-132
head	SUPR 6-134
job initiation	SUPR 6-135
job termination	SUPR 6-137
process termination	SUPR 6-139
types of	SUPR 6-131
Log-on group	CMND 3-6
Logging	OPER 1-3, 5-29
	OP33 1-3, 5-27,
	5-40
	OP44 1-4, 5-28
changing characteristics	SUPR 6-14
changing status of	SUPR 6-43
files	CMND 2-76
listing status of	SUPR 6-43
memory error	SUPR 6-127
off the system	CMND 2-26
on the system	CMND 2-80, 2-93,
	2-129
system	SUPR 6-127
user	SUPR 6-155
	INTR 10-93
CLOSELOG	INTR 2-19
OPENLOG	INTR 2-156
Powerfail recovery	OPER 4-36
Restarting	OPER 5-34
Shutdown	OPER 4-35
Startup	OPER 4-35
System failure	OPER 4-35
WRITELOG	INTR 2-198
Logging System	SUPR 6-127
Logical code segment index (LCST)	
display	DEBUG 2-13, 2-25

stack analysis
 Logical device, display to
 Logical device number

 Logical index number
 Logical mount/dismount record
 Logical number of seconds allowed
 Logical record pointer
 Logical records
 LOGLIST
 =LOGOFF command

 =LOGON command

 LOGON option (UDC declaration)

DEBUG 4-2
 DEBUG 2-18, 3-28
 SUPR 6-4, 6-22,
 6-88, 6-93
 INTR 8-2
 SUPR 6-148
 SUPR 6-42
 INTR 10-91
 INTR 10-2
 UTIL 4-1
 OPER 1-8, 3-36
 OP33 1-8, 3-36
 OP44 1-8, 3-36
 OPER 1-8, 3-37
 OP33 108, 3-37
 OP44 1-8, 3-37
 CMND 3-7

M

M command
 definition
 use
 use in privileged mode
 Machine Instructions
 Magnetic tape
 care and handling
 considerations for files
 format
 labels
 unit
 MAIL intrinsic
 specifications
 usage
 Mailbox
 Main Memory, changing size of
 MAINT MODE switch

 Maintenance interface diagnostic
 MAKECAT program

 MANAGER SYS
 MAP parameter
 listing
 use
 Master queue
 Master volume
 MDUMP.PUB.SYS
 MEMLOGAN
 Error Messages
 Memory-Logging Operations

DEBUG 2-19
 DEBUG 3-16
 DEBUG 3-29
 CONV 3-6

 OPER E-2
 INTR 10-69
 SUPR 6-117, F-7
 INTR D-1
 INTR 5-3

 INTR 2-151
 INTR 7-10
 INTR 7-10
 SUPR 6-19, 6-79
 OP44 2-4
 OP33 2-3
 OP33 5-33
 INTR 4-50
 SUPR G-1
 UTIL 4-1 - 4-3

 DEBUG 3-2
 DEBUG 3-1
 INTR 9-5
 SUPR 4-10, I-2
 UTIL 3-2

 UTIL 12-5
 UTIL 12-1

Output	UTIL 12-2
Running	UTIL 12-1
Memory Dump, Series II/III	UTIL 3-1
Memory Dump, Series 30/33/44	UTIL 3-1, 3-3
MEMORY DUMP Switch	OP33 2-6
Memory error logging	SUPR 6-127
Memory location in expressions	DEBUG 2-2
Memory logging	OPER 1-4
	OP33 1-4
	OP44 1-4
Memory management (system failure)	OPER B-7
	OP33 C-6
	OP44 C-6
Memory test	OPER C-1, C-4
Memory, Virtual	SUPR 6-46
Memory-Dump Procedure	CONV 2-6
MEMTIMER	UTIL 13-1, 13-2
Message Catalog	
contents of	SUPR 6-13
creation of	SUPR 6-43, G-1
format	SUPR G-3
layout	SUPR G-2
listing of	SUPR 6-43
name of	SUPR 6-43
table	SUPR G-1
Message files	INTR 3-1 - 3-21
Message system	INTR 4-48
	SUPR G-1
MAKECAT program	INTR 4-49
message catalog	INTR 4-48
Messages	
cold-load error	OPER A-1 - A-8
	OP33 B-1 - B-8
	OP44 B-1 - B-8
	OPER 6-8
	OPER 6-6
	OPER 6-15
	OP33 A-2
	OP44 A-13
	OPER 4-13, 5-4
	OP33 4-14, 5-20
	OP44 4-14, 5-20
	CMND 2-209
	CMND 2-209, 2-211
	CMND 2-170
	INTR 10-18
	INTR E-2
	SEGM 4-1 - 4-5
	CMND 2-211
	CMND 2-209
	INTR 10-18
	OPER 6-2

System failure	OPER B-1 - B-5
	OP33 C-1 - C-12
	OP44 C-1 - C-17
user	INTR 10-18
user logging	OPER 6-26
Micro-programmed diagnostics	OPER C-1
MODE Function	UTIL 11-17
Modify	
base	DEBUG 2-19
code	DEBUG 2-11, 3-18
privileged mode	DEBUG 2-19, 3-29
register	DEBUG 2-21, 3-16
value	DEBUG 2-19, 3-16
Modifying your system	OPER F-1
	OP33 G-1
:MOUNT command	CMND 2-108
	SUPR I-15, I-19
example	CMND 2-109
operation	CMND 2-108
parameters	CMND 2-108
usage	CMND 2-108
Mount/dismount record	SUPR 6-147, 6-148
	6-131
Mounting disc packs	OPER 4-28
	OP33 4-30
	OP44 4-30
Mounting volume sets	CMND 2-108
	OPER 4-30
Moving the DB pointer	INTR 9-5
Moving-head disc	SUPR 6-62
MPE	CONV 2-1
MPE commands	SEGM 1-5, 2-1,
	2-31
specification	DEBUG 2-2
use in DEBUG	DEBUG 4-3, 4-6,
	4-7
:MPLINE command	OPER 1-8, 3-38
	OP33 1-9, 3-38
	OP44 1-8, 3-38
MPYD Instruction	CONV 3-6
MR command	
definition	DEBUG 2-21
use	DEBUG 3-16
use in privileged mode	DEBUG 3-30
MRJE	SUPR 6-17, A-3,
	B-12
MRJE command	CMND 2-110
example	CMND 2-110
operation	CMND 2-110
usage	CMND 2-110
MRJE/3000 subsystem, accessing	CMND 2-110
MRJE/3000, system failures	OPER B-14

:MRJECONTROL command	OP44 1-8, 3-41
	OP33 1-9, 3-42
	OPER 1-8, 3-41
MTS/3000	SUPR 6-17, 6-29, A-4
Multi-access	INTR 10-12
Multiple access of files	INTR 10-13
Multiple RIN optional capability	INTR 6-1
Multiple RINS (MR) Attribute	SUPR 3-4
Multiprogramming	OPER 1-1
	OP33 1-1
	OP44 1-1
	INTR E-13
MYCOMMAND errors	
MYCOMMAND intrinsic specifications	
usage	INTR 2-153
	INTR 4-4
N	
Name	
account	SUPR 3-6
group	SUPR 3-6
Intrinsic	SEGM 2-2
MPE command	SEGM 2-1
Segmenter command	SEGM 2-23
user	SUPR 3-6
Nested commands, user-defined	CMND 3-12
New files	INTR 10-10
New segment names, assigning to RBM's	SEGM 3-10
NEWACCT	SUPR 2-26, 4-4
NEWGROUP	SUPR 2-30, 5-3
\$NEWPASS	CMND 2-59, 7-6, 7-10
	INTR 10-10
NEWSEG segmenter command	SEGM 2-23
NEWUSER	SUPR 2-33, 5-4
NEWVSET	SUPR 2-36
No-wait I/O	INTR 10-62
NOBREAK option (UDC declaration)	CMND 3-6
NOHELP option (UDC declaration)	CMND 3-8
Nondestructive read, for message files	INTR 3-3, 3-8
Non-echoing console output	OPER 1-7
Non-sharable Device (ND) Attribute	SUPR 3-3
Non-sharable device access	INTR 10-7
Non-sharable devices	INTR 10-15
Non-system domain devices	SUPR 4-9, I-1, I-3
	OPER 4-26
NOWAIT	CONV 2-6
\$NULL	INTR 10-10
NULL option	SUPR 6-78

NULL option (RELOAD)

OPER 5-18
OP33 5-17
OP44 5-18

0

0 prefix

= command

D command

M command

Obtaining file access information

Obtaining file error information

Obtaining process run time

Obtaining system timer information

Obtaining terminal output speed

Obtaining terminal type information

Obtaining the calendar date

Obtaining the current time

Octal mode

display

expression result

modify

Octal value in expression

Offset

display base

modify base

Old files

\$OLDPASS, text discussion

OP attribute

Opening

\$STDIN

\$STDLIST

a file on a device other than disc

a new disc file

an old disc file

files

OPENLOG intrinsic

specifications

usage

Operator involvement with input devicefiles

Operator messages

Operator's Console

OPERATOR.SYS, Creating

Optical Mark Reader

OPTION VARIABLE

Option variable

Optional capabilities

data segment management

DEBUG 2-27

DEBUG 2-12

DEBUG 2-20

INTR 10-66

INTR 10-68

INTR 4-44

INTR 4-42

INTR 5-26

INTR 5-25

INTR 4-44

INTR 4-44

DEBUG 2-11

DEBUG 2-27

DEBUG 2-19

DEBUG 2-2

DEBUG 2-12

DEBUG 2-19

INTR 10-11

CMND 2-59

INTR 10-11

SUPR 3-2, 6-1

INTR 10-36

INTR 10-36

INTR 10-34

INTR 10-38

INTR 10-31

INTR 10-27

INTR 2-156

INTR 10-94

OPER 4-5, 4-6

OP33 4-5, 4-6

OP44 4-5, 4-6

INTR E-18

INTR 4-18

SUPR 4-15

INTR 5-28

CONV 3-3

INTR 1-7, 2-1

INTR 8-1

definitions	INTR 1-12
multiple resource	INTR 6-1
privileged mode	INTR 7-1
process handling	INTR 7-1
Optional parameters	CMND 1-10
	INTR 1-7
Organization of user processes	INTR 7-1
:OUTFENCE command	OPER 1-8, 3-43
	OP33 1-8, 3-44
	OP44 1-8, 3-44
OUTM Function	UTIL 1-17
Output devicefile	OPER 4-6
	OP33 4-6
	OP44 4-6
status	CMND 2-172
OUTPUT Function	UTIL 11-19, 11-20
Output spooling	OPER 4-11
	OP33 4-11
	OP44 4-11
Output spooling control	OPER 4-12 - 4-14
	OP33 4-12 - 4-14
	OP44 4-12 - 4-13
OVER-TEMP light	OP44 2-5
	OP33 2-6

P

P register	
assign value	DEBUG 2-18, 3-17
display	DEBUG 2-13, 2-25
modify	DEBUG 2-21, 3-16
stack analysis	DEBUG 3-20, 4-2
P-relative addressing	DEBUG 2-11, 3-18
PANEL DSBL-ENBL switch	OPER 2-1
Paper tape punch	INTR 5-3
Paper tape reader	INTR 5-1
Paper tapes	INTR 5-21
Parameter File (SF) Attribute	SUPR 3-3
Parameter settings	SUPR C-1
Parameter, delimiters	CMND 1-2
Parameter, keyword	CMND 1-3
Parameter, optional	CMND 1-10
Parameter, positional	CMND 1-3
Parameters	
DEBUG commands	DEBUG 2-2
DEBUG intrinsics	DEBUG 2-3
definition of	INTR 1-7
	SUPR 1-2
Intrinsic	SEGM 2-3
keyword	SUPR 1-2, 1-3
	CMND 1-3

list of	SUPR 1-3
mixed	SUPR 1-2
MPE command	SEGM 2-2
MPE commands	DEBUG 2-3
option variable	INTR 1-7
	CMND 1-10
optional	INTR 1-7
passing by value	INTR 1-7
positional	INTR 1-7
	SUPR 1-2
required	INTR 1-8
Segmenter command	SEGM 2-2
using numeric values	INTR 1-8
Parity, checking	INTR 5-14
Parity, setting	INTR 5-23
Passing parameters	INTR 1-7
Passwords	UTIL 8-10
PATCH	UTIL 9-1 - 9-3
PATCH Error Numbers	UTIL 9-3
PAUSE intrinsic	
specifications	INTR 2-157
usage	INTR 4-19
PB-relative addressing	DEBUG 2-11, 3-18
PCB register display	DEBUG 2-13, 3-13
PCHECK intrinsic	INTR 2-158
PCLOSE intrinsic	INTR 2-159
PCONTROL intrinsic	INTR 2-160
PDEFN command, VINIT	SUPR 2-69, I-30
	OPER D-5
	OP33 D-5
	OP44 D-5
PDSK Function	UTIL 1-19
PDTRACK command, VINIT	SUPR 2-69, I-33
	OP33 D-8
	OP44 D-8
	OPER D-8
PDTT Function	UTIL 1-21
Perform Cold dump operation	OPER 5-31
Permanent files	INTR 10-14, 10-40
Permanently privileged programs	INTR 9-1
PF/ARS DSBL-ENBL switch	OPER 2-1
PFIL Function	UTIL 1-23
PFRE Function	UTIL 1-25
PFSPACE command, VINIT	SUPR 2-69, I-32
	OP33 D-7
	OPER D-6
	OP44 D-7
Physical mount/dismount record	SUPR 6-147
Physical records	INTR 10-2
PIN	INTR 7-1
PL-relative addressing	DEBUG 2-11, 3-20
PLABEL command, VINIT	SUPR I-31

	OP33 D-6
	OP44 D-6
PMAP parameter	
listing	DEBUG 3-4
use	DEBUG 3-1
POPEN intrinsic	INTR 2-161
Positional parameters	CMND 1-3, 2-4
	INTR 1-7
Power down system	OPER 5-4
	OP33 5-4
	OP44 5-4
Power failure and Input spooling	OPER 4-11
	OP33 4-11
	OP44 4-11
Powerfail Recovery, User Logging	OPER 4-36
Power up system	OPER 5-6
	OP33 5-5
	OP44 5-6
Pre-defined files	INTR 10-10
PREAD intrinsic	INTR 2-162
PREP command	CMND 2-111
example	CMND 2-113
operation	CMND 2-112
parameters	CMND 2-111
syntax	CMND 2-111
usage	CMND 2-112
PREPARE segmenter command	SEGM 1-5, 2-24, 2-25
PREPRUN command	CMND 2-114
example	CMND 2-116
operation	CMND 2-116
parameters	CMND 2-114
syntax	CMND 2-114
usage	CMND 2-116
Primary/Secondary Character Sets	OPER 4-21
Primary Storage Space Overflow	CONV 3-6
PRINT Intrinsic	CONV 2-2
specifications	INTR 2-163
usage	INTR 4-16
PRINTFILEINFO intrinsic	
specifications	INTR 2-166
usage	INTR 10-45,10-47
Printing reader/punch	INTR 5-3
PRINTOP intrinsic	
specifications	INTR 2-165
usage	INTR 4-18
PRINTOPREPLY intrinsic	
specifications	INTR 2-166
usage	INTR 4-18
Priority request, Job/session	SUPR 6-127
Private breakpoints	DEBUG 2-5, 3-28
Private data area	INTR 7-1

Private disc volumes	OPER 1-2, 4-24 - 4-31
	OP33 1-2, 4-26 - 4-34
	OP44 1-2, 4-26 - 4-34
Private disc volumes (UV) attribute	SUPR 3-3
Private volume conditioning	OPER 4-29
	OP33 4-32
	OP44 4-32
Private volumes	SUPR 4-9, I-1
adding	UTIL 8-2a
applications	OPER 4-26
assigning set to group	SUPR I-31
dismounting	SUPR I-17
enabling	OPER 4-31
errors	OPER 4-30
implementing	INTR E-14
managing	OPER 4-29
mounting	OPER 4-31
moving existing group to subsystem	OPER 4-30
using	SUPR I-20
Privilege Mode (PM) Attribute	INTR 10-17
Privileged Mode	SUPR I-3
Privileged Mode capability	SUPR 3-4
Privileged Mode command summary	CONV 2-5
Privileged Mode use with DEBUG	INTR 9-1
Privileged programs	DEBUG 3-27
Procedure type	DEBUG 3-26
Procedures	INTR 9-1
Process activation	INTR 2-2
Process and user related (system failure)	INTR 1-1
	INTR 7-14
	OPER B-10
	OP33 C-9
	OP44 C-9
	INTR 4-19
Process break	DEBUG 2-13, 3-30
Process control block (PCB) display	
Process Control Block (PCB) Table, changing size of	SUPR 6-11, 6-35
Process control block extension	INTR 10-17
Process identification number	INTR 7-1
Process priorities	INTR 7-15
Process run time	INTR 4-44
Process states	INTR 7-15
Process substates	INTR 7-2
Process-handling (PH) Attribute	SUPR 3-5
Process-handling capability	INTR 7-1
Process-to-process communication	INTR 7-2
Processes	CMND C-1
aborting	INTR 4-20
activating	INTR 7-3

avoiding deadlocks	INTR 7-13
breaking	INTR 4-19
creating	INTR 7-3
CS	CMND 2-94
deleting	INTR 7-8
description	INTR 7-1
DS	CMND 2-94
ES	CMND 2-94
father	INTR 7-3
HIPRI	CMND 2-93
identification number	INTR 7-1
inter-process communication	INTR 4-44
mail	INTR 7-10
maximum	CMND 2-94
organization	INTR 7-2
priority	INTR 7-15
process-handling capability	INTR 7-1
rescheduling	INTR 7-13
run time	INTR 4-44
scheduling	INTR 9-5
son	INTR 7-3
state	INTR 7-15
substate	INTR 7-2
suspending	INTR 4-19, 7-8
terminating	INTR 4-20
PROCESSOR OVERTEMP	OP33 2-3
PROCTIME intrinsic	
specifications	INTR 2-168
usage	INTR 4-44
Program	
attributes	SUPR 3-3
Capability Sets	SUPR 3-1
commands, a list of	CMND 1-6, 7-6, 7-8
errors	INTR E-5
execution after break	CMND 1-7
Files	UTIL 9-1
Files, preparing	SEGM 3-9
label	INTR 7-1
listings	CMND D-1
Programmatic execution of MPE commands	INTR 4-9
PROTECTED light	OP33 2-3
PTAPE command	CMND 2-117
example	CMND 2-118
operation	CMND 2-117
usage	CMND 2-117
PTAPE intrinsic	
specifications	INTR 2-169
usage	INTR 5-27
PURGE command	CMND 2-119
example	CMND 2-120
parameters	CMND 2-119

usage	CMND 2-119
PURGE Function	UTIL 11-21
PURGEACCT	SUPR 2-38, 4-8
PURGEGROUP	SUPR 2-40, 5-7
PURGERBM segmenter command	SEGM 1-5, 2-26
PURGERL segmenter command	SEGM 1-5, 2-27
PURGESL segmenter command	SEGM 1-5, 2-28
PURGEUSER	SUPR 2-42, 5-8
PURGEVSET	SUPR 2-43
PUTJCW intrinsic	
specifications	INTR 2-170
usage	INTR 4-47
PVOL Function	UTIL 1-27
PWRITE intrinsic	INTR 2-171

Q

Q register	
assign value	DEBUG 2-28, 3-17
displacement from	DEBUG 2-25, 4-2
display	DEBUG 2-13, 3-16
modify	DEBUG 2-21, 3-16
stack analysis	DEBUG 3-20, 4-2
Q-relative addressing	DEBUG 3-11, 3-12
QASL Instruction	CONV 3-6
QASR Instruction	CONV 3-6
QS parameter	DEBUG 2-34
:QUEUE Parameters, changing	SUPR 6-10
Queues	INTR 9-5
Quiet mode (SETMSG OFF)	CMND 2-169
QUIT Function	UTIL 11-22a
QUIT intrinsic	
specifications	INTR 2-172
usage	INTR 4-20
QUITPROG intrinsic	
specifications	INTR 2-173
usage	INTR 4-22

R

R command	
definition	DEBUG 2-23
use	DEBUG 3-9
use in privileged mode	DEBUG 3-28
RBM (relocatable binary module)	
deleting	SEGM 3-10
Entry Points	SEGM 2-3
Internal Flags, setting	SEGM 3-19, 3-22
listing of	SEGM 3-7
transferring	SEGM 3-9

READ intrinsic	
specifications	INTR 2-174
usage	INTR 4-16
Reading	
a file in direct-access mode	INTR 10-49
a file in sequential order	INTR 10-47
cards with colons in column one	OPER 5-20
input from \$STDIN and \$STDINX	INTR 4-16
job control statements	OP44 5-20
	OP33 5-19
magnetic tape files	INTR 3-70
paper tapes without X-OFF control	INTR 5-27
the terminal input timer	INTR 5-19
user file labels	INTR 10-62
READX intrinsic	
specifications	INTR 2-175
usage	INTR 4-16
READY light	OP33 2-3
:RECALL command	CMND 2-121
example	CMND 2-121
syntax	CMND 2-121
usage	CMND 2-121
RECEIVEMAIL intrinsic	
specifications	INTR 2-176
usage	INTR 7-12
Receiving mail	INTR 7-12
Recommended backup procedures	OP33 I-1
Record formats	INTR 10-3
Record width	SUPR 6-84,
	A-1 - A-3,
	B-1 - B-15
Records	INTR 10-2
RECOVER2	UTIL 2-1, 2-2
REDO command	CMND 2-122
example	CMND 2-122
operation	CMND 2-122
usage	CMND 2-122
Reference specifications	SUPR 1-4
:REFUSE command	OPER 1-9, 3-44
	OP33 1-8, 3-35
	OP44 1-8, 3-45
	OPER C-2
Register Codes, CPU	
Registers	
assign value	DEBUG 2-28, 3-17
display	DEBUG 2-13, 3-16
modify	DEBUG 2-21, 3-16
REJECT intrinsic	INTR 2-178
Relative I/O	INTR 10-8
Block format	INTR 10-3
FDELETE	INTR 2-61
FFILEINFO	INTR 2-63
RELEASE command	CMND 2-124

example	CMND 2-124
operation	CMND 2-124
parameters	CMND 2-124
usage	CMND 2-124
Releasing global RIN's	INTR 6-3
RELOG command	CMND 2-125
example	CMND 2-125
operation	CMND 2-125
parameters	CMND 2-125
syntax	CMND 2-125
usage	CMND 2-125
RELOAD	OPER 4-23, 5-16, F-1
	OP33 4-25, 5-14
	OP44 4-23, 5-15
	SUPR 6-59, 6-61, 6-62
RELOAD options	OPER 5-17
	OP33 5-16
	OP44 5-17
Relocatable Libraries (RL's)	
adding procedure to	SEGM 3-11,3-12
creating	SEGM 3-10,3-12
definition of	SEGM 1-1
design for management of	SEGM 3-13
listing of	SEGM 3-11,3-12
REMOTE command	CMND 2-126
operation	CMND 2-126
parameters	CMND 2-126
syntax	CMND 2-126
usage	CMND 2-126
Remote console facility	OP44 F-1
	OP33 F-1
REMOTE HELLO command	CMND 2-129
operation	CMND 2-131
parameters	CMND 2-129
syntax	CMND 2-129
usage	CMND 2-130
Removable discs	SUPR 4-9
RENAME command	CMND 2-132
example	CMND 2-133
operation	CMND 2-132
parameters	CMND 2-132
usage	CMND 2-132
Renaming a file	INTR 10-44
=REPLY/:REPLY command	OPER 1-9, 3-45
	OP33 1-8, 3-46
	OP44 1-8, 3-46
	SUPR 2-45, 4-6
REPORT	CMND 2-135
REPORT command	CMND 2-137
example	CMND 2-136
operation	

parameters	CMND 2-135
usage	CMND 2-136
Reports, Account/Group	SUPR 5-9
Requesting a process break	INTR 4-17
Requesting a reply from the Operator's Console	INTR 4-18
Required parameters	INTR 1-8
Rescheduling processes	INTR 7-13
RESET command	CMND 2-138
example	CMND 2-138
operation	CMND 2-138
parameters	CMND 2-138
usage	CMND 2-138
RESET switch	OP33 2-6
RESETACCT	SUPR 2-46, 4-7
RESETCONTROL intrinsic	
specifications	INTR 2-179
usage	INTR 4-40
RESETDUMP command	
definition	DEBUG 2-32
example	CMND 2-139
usage	CMND 2-139
use	DEBUG 4-7
RESETDUMP intrinsic	INTR 2-180
definition	DEBUG 2-31
use	DEBUG 4-7
Resetting the logical record pointer	INTR 10-91
Resource Identification number (RIN)	INTR 6-1
Resource management	INTR 6-1
Resources	INTR 6-1
Restarting User Logging	OPER 5-2, 5-34
RESTORE	SUPR 2-47, 6-121
RESTORE Command	CMND 2-140
example	CMND 2-443
operation	CMND 2-142
parameters	CMND 2-140
syntax	CMND 2-140
usage	CMND 2-142
RESTORE option	SUPR 6-78
RESTORE option (RELOAD)	OPER 5-18
	OP33 5-16
	OP44 5-17
Restoring user files from sysdump tape or disc	OPER 5-28
	OP33 5-26
	OP44 5-27
RESUME command	CMND 2-144
example	CMND 2-145
operation	CMND 2-144
usage	CMND 2-144
:RESUMEJOB command	OPER 1-9, 3-47
	OP33 1-9, 3-48
	OP44 1-9, 3-48
RESUMELOG	SUPR 2-52, 6-130

:RESUMESPOOL command	OP44 1-9, 3-49
	OP33 1-9, 3-49
	OPER 1-9, 3-48, 4-12a
Resuming execution	
with E command	DEBUG 2-16, 3-9
with R command	DEBUG 2-23, 3-9
Retrieving Dumped Files	SUPR 6-121
Returns, intrinsic	INTR 2-2
REVEAL segmenter command	SEGM 1-5, 2-30
RIN (Resource Identification Number)	INTR 6-1
acquiring	CMND 2-75
changing values regarding	CMND 2-78
releasing	SUPR 6-13
RINS, Global	CMND 2-75
	SUPR 6-13, 6-40, 6-41
RJE command	CMND 2-146
example	CMND 2-147
parameters	CMND 2-146
usage	CMND 2-147
RJE/3000	SUPR 6-17, A-3, A-5
RJE/3000 subsystem command	CMND 2-147
RPG command	CMND 2-148
example	CMND 2-148
parameters	CMND 2-148
usage	CMND 2-149
RPG program	
compiling	CMND 2-148, 2-150, 2-152
executing	CMND 2-150
preparing	CMND 2-150, 2-152
RPGGO command	CMND 2-150
example	CMND 2-151
parameters	CMND 2-150
usage	CMND 2-150
RPGPREP command	CMND 2-152
example	CMND 2-153
operation	CMND 2-153
parameters	CMND 2-152
usage	CMND 2-152
RUN command	CMND 2-155
example	CMND 2-158
parameters	CMND 2-155
syntax	CMND 2-155
usage	CMND 2-157
RUN Function	UTIL 11-22c
RUN indicator	OPER 2-3
RUN light	OP44 2-4
	OP33 2-3, 2-6

Run-time errors
 Run-time messages
 RUN/HALT field
 RUN/HALT keys on system console
 RUN/HALT switch

INTR E-7
 INTR E-2
 OP33 2-8
 OP33 2-9
 OPER 2-3
 OP33 2-5, 2-6
 OP44 2-3

S

S register	
assign value	DEBUG 2-28, 3-17
display	DEBUG 2-13, 3-16
modify	DEBUG 2-21, 3-16
stack analysis	DEBUG 4-2
SADUTIL, Series II/III Systems	UTIL 1-1
Creating a Cold-Load Tape	UTIL 1-2 - 1-5
Dialog With Operator	UTIL 1-7
Error Messages	UTIL 1-34, 1-35
SADUTIL, Series 30/33/44 Systems	UTIL 1-37
Dialogue With Operator	UTIL 1-39
Error Messages	UTIL 1-60 - 1-62
SAVE command	CMND 2-159
example	CMND 2-160
parameters	CMND 2-159
usage	CMND 2-159
SAVE Function	UTIL 1-29
Scheduling Processes	CONV 2-4, 2-6
	INTR 9-5
Scheduling Queue, changing	SUPR 6-14, 6-47
SCRATCH command, VINIT	SUPR 2-69, I-29
	OPER D-3
	OP33 D-3
	OP44 D-3
SEARCH intrinsic	
specifications	INTR 2-181
usage	INTR 4-3
Searching arrays	INTR 4-3
Sector display	DEBUG 2-15, 3-29
Sectors	INTR 10-2
SECURE command	CMND 2-161
example	CMND 2-161
operation	CMND 2-161
parameters	CMND 2-161
usage	CMND 2-161
Security	
Account-level	SUPR 3-11
File	SUPR 3-10
File-level	SUPR 3-14
Group-level	SUPR 3-13
Restrictions	UTIL 8-9

SECURITY LEVELS keyswitch	OP33 2-3
Segment, changing limits	SUPR 6-15
Segment Names, New, assigning to RBM's	SEGM 3-10
Segment number	
B command	DEBUG 2-7
location	DEBUG 3-6
R command	DEBUG 2-23
Segmented Libraries	
adding a procedure to	SEGM 3-16, 3-18
creating	SEGM 3-16, 3-17
definition of	SEGM 1-2
deleting an entry point from	SEGM 3-19
designating for mgt. of	SEGM 3-19
listing of	SEGM 3-16, 3-18
Segmented Library(SL) Files	UTIL 10-1
SEGMENTER command	SEGM 1-5, 2-31
example	CMND 2-162
parameters	CMND 2-163
usage	CMND 2-162
Segmenter	
accessing and exiting	SEGM 3-1
Commands	SEGM 1-5, 2-2
driver	SEGM 2-4 - 2-34
Error Messages	INTR 7-6
subsystem	SEGM 4-1 - 4-5
Segments	INTR 7-6
activating	INTR 8-10
changing size of extra data segment	INTR 8-15
code segments	INTR 8-1
creating an extra data segment	INTR 8-2
data segment management capability	INTR 8-1
data segments	INTR 8-1
deleting	INTR 8-15
description	INTR 8-1
freezing	DEBUG 2-17, 3-30
logical index number	INTR 8-2
stack segment	INTR 8-1
transferring data from	
extra data segment to stack	INTR 8-15
transferring data from	
stack to extra data segment	INTR 8-15
unfreezing	DEBUG 2-26, 3-30
SELECTED light	OP33 2-3
Selftest	OP44 2-7,
	H-1 - H-2
	OP33 5-35
	INTR 7-11
Sending mail	
SENDMAIL intrinsic	
specifications	INTR 2-182
usage	INTR 7-11

Sequence field, in commands	CMND 1-5
Sequential access file reading	INTR 10-47
Sequential access file writing	INTR 10-49
SERIAL command, VINIT	SUPR 2-69, I-28
	OPER D-2
	OP33 D-2
	OP44 D-2
Serial disc	SUPR 4-9
backup to	SUPR 6-116
defined	SUPR 6-2
specifying class	SUPR 6-36, 6-89
system failure	OPER B-15
	OP33 C-12
	OP44 C-17
volumes	OPER 1-2, 5-32
	OP33 1-2
	OP44 1-2
Serializing a disc	OP44 5-34
	OP33 5-36
Series 30/33/44 systems, variations	SUPR J-1
Session	OPER 1-1
	OP33 1-1
	OP44 1-1
command log-on	CMND 2-4
initiating	CMND 2-80
main process	INTR 7-1
status, displaying	CMND 2-180
termination (BYE command)	CMND 2-26
termination and suspension	CMND 2-8
using SETDUMP in	DEBUG 4-3
Sessions, changing maximum number of	
concurrent allowed	SUPR 6-42
Sessions, command logon	CMND 3-12
SETCATALOG command	SUPR 2-52, 4-13,
	5-10
	CMND 2-164
example	CMND 2-165
operation	CMND 2-164
parameters	CMND 2-164
usage	CMND 2-164
SETDUMP command	CMND 2-164
definition	CMND 2-166
example	DEBUG 2-34
parameters	CMND 2-166
usage	CMND 2-166
use in job	CMND 2-166
use in session	DEBUG 4-6
SETDUMP intrinsic	DEBUG 4-3
definition	INTR 2-184
use in job	DEBUG 2-33
use in session	DEBUG 4-6
SETJCW command	DEBUG 4-5
	CMND 2-167

example	CMND 2-168
operation	CMND 2-168
parameters	CMND 2-167
usage	CMND 2-167
SETJCW intrinsic	
specifications	INTR 2-185
usage	INTR 4-46
SETMSG command	CMND 2-169
example	CMND 2-169
operation	CMND 2-169
parameters	CMND 2-169
usage	CMND 2-169
Setting parity	INTR 5-23
Setting terminal type	INTR 5-25
Setting unedited terminal mode	INTR 5-26
SF attribute	SUPR 3-3
Shared files	INTR 10-16
Shift Instruction Differences	CONV 3-6
SHOW Function	UTIL 11-23 -
	11-25
SHOWALLOW command	CMND 2-170
example	CMND 2-170
operation	CMND 2-170
parameters	CMND 2-170
syntax	CMND 2-170
usage	CMND 2-170
SHOWCATALOG command	CMND 2-171
	SUPR 2-54, 4-13,
	5-10
example	CMND 2-171
operation	CMND 2-171
parameters	CMND 2-171
usage	CMND 2-197
:SHOWCOM command	OP44 1-9, 3-51
	OP33 1-9, 3-51
	OPER 1-9, 3-49
SHOWDEV command	CMND 2-172
operation	CMND 2-172
parameters	CMND 2-172
usage	CMND 2-172
SHOWIN command	CMND 2-175
example	CMND 2-177
operation	CMND 2-176
parameters	CMND 2-175
usage	CMND 2-176
SHOWJCW command	CMND 2-179
operation	CMND 2-179
parameters	CMND 2-179
usage	CMND 2-179
SHOWJOB command	CMND 2-180
example	CMND 2-182
operation	CMND 2-181

parameters	CMND 2-180
usage	CMND 2-181
SHOWLOG	SUPR 2-55, 6-114
SHOWLOGSTATUS command	CMND 2-184
example	CMND 2-184
operation	CMND 2-184
parameters	CMND 2-184
syntax	CMND 2-184
usage	CMND 2-184
SHOWME command	CMND 2-185
example	CMND 2-186
operation	CMND 2-185
parameters	CMND 2-185
usage	CMND 2-185
SHOWOUT command	CMND 2-187
operation	CMND 2-188
parameters	CMND 2-187
usage	CMND 2-188
SHOWQ Command	SUPR 2-56, D-10
	CONV 2-6
format	SUPR D-10
SHOWTIME command	CMND 2-192
example	CMND 2-192
operation	CMND 2-192
usage	CMND 2-192
=SHUTDOWN command	OPER 1-9, 3-51
	OP33 1-9, 3-53
	OP44 1-9, 3-53
Shutdown procedure	OPER 5-3
	OP33 5-3
	OP44 5-3
SL segmenter command	SEGM 1-5, 2-32
SLPATCH	UTIL 10-1 - 10-3
SM attribute	SUPR 3-1
Software dump facility	OP44 5-29
	OP33 5-29
Son process	INTR 7-3
Source of file characteristics	INTR 10-20
Source of process activation	INTR 7-14
SPACE utilization by system disc	SUPR E-1
Spacing on disc or tape files	INTR 10-89
Special Characters	DEBUG
# prefix	DEBUG 2-2
\$ command definition	DEBUG 2-28
\$ command use	DEBUG 3-17
% prefix	DEBUG 2-2
= command definition	DEBUG 2-27
= command use	DEBUG 3-17
Special terminal keys	INTR 5-8
SPEED command	OP44 1-9, 3-54
example	CMND 2-194
operation	CMND 2-193

parameters	CMND 2-193
usage	CMND 2-193
SPL	CONV 3-4
calling intrinsics from	INTR 1-2
command	CMND 2-195
command, example	CMND 2-196
command, operation	CMND 2-196
command, parameters	CMND 2-195
command, usage	CMND 2-196
description	INTR 1-1
program	
program, compiling	CMND 2-165, 2-197,2-199
	CMND 2-197
program, executing	CMND 2-197,
program, preparing	2-165
	CMND 2-197
SPLGO command	CMND 2-198
example	CMND 2-197
operation	CMND 2-197
parameters	CMND 2-197
usage	CMND 2-197
Split stack	INTR 1-11, 2-3
SPLPREP command	CMND 2-199
example	CMND 2-200
operation	CMND 2-200
parameters	CMND 2-199
usage	CMND 2-199
SPOOK	
Command Entry	UTIL 11-3
Commands	UTIL 11-5- 11-29
Error Messages	UTIL 11-31
Operations	UTIL 11-1, 11-2
Running	UTIL 11-3
Spoolfiles	
change maximum number of opened	SUPR 6-33, 6-87
change size of	SUPR 6-46
Spooling	INTR 10-23
definition	OPER 1-1
	OP33 1-1
	OP44 1-1
Facility	CONV 2-7
Input	OPER 4-7
	OP33 4-7
	OP44 4-7
Input control	OPER 4-9
	OP33 4-9
	OP44 4-9
Input from magnetic tape	OPER 4-11
option (S) definition of	SUPR 6-7
option (S) designate	SUPR 6-31, 6-85, B-1 - B-15
Output	OPER 4-11

Output control	OP33 4-11
	OP44 4-11
	OPER 4-12
	OP33 4-12
	OP44 4-12
SPREAD option	SUPR 6-77
SPREAD option (RELOAD)	OPER 5-17
	OP33 5-16
	OP44 5-17
SSLC (Synchronous Single-Line Controller)	SUPR B-9
ST parameter	DEBUG 2-34
ST register	
assign value	DEBUG 2-28, 3-17
display	DEBUG 2-14, 3-16
modify	DEBUG 2-21, 3-16
Stack	
changes to limits	SUPR 6-48
changing size	INTR 4-22
delete values from	DEBUG 2-16, 4-5
dump analysis	DEBUG 4-10
Dump facility capabilities	DEBUG 1-2
Dump facility specifications	DEBUG 2-30
Dump facility use	DEBUG 4-1
markers display	DEBUG 2-25, 3-20, 4-1
Requirements	CONV 2-3, 3-2
segment	INTR 8-1
segment index (STAK) display	DEBUG 2-13, 3-30
sizes	INTR 4-22
split stack	INTR 1-11, 2-3
trace and analysis	DEBUG 4-1
STACKDUMP intrinsic	INTR 2-170
definition	DEBUG 2-35
use	DEBUG 4-8
STAK register display	DEBUG 2-13, 3-30
Standard instructions (System Startup)	OPER 5-19
	OP33 5-18
	OP44 5-19
	INTR 4-31
	SUPR 3-3
	OP33 2-9
	OP33 2-3, 2-6
	OP44 2-3
	OP44 1-9, 3-56
	OP33 1-9, 3-54
	OPER 1-9, 3-52
	SUPR 6-57
	OPER 4-22
	OP33 4-22, 5-18
	OP44 4-22, 5-19
	OP33 2-8, 2-9
	OPER 6-2
Standard traps	
Standard User	
START key on system console	
START switch	
:STARTSPOOL command	
Startup	
Startup procedure	
Status display	
Status (ST) messages	

\$STDIN	INTR 10-9
\$STDINX	INTR 10-10
\$STDLIST	INTR 10-10
STOP Function	UTIL 1-33
:STOPSPPOOL command	OP44 1-9, 3-58
	OP33 1-9, 3-56
	OPER 1-9, 3-54
Storage devices (care & handling)	OPER E-1
	OP33 H-1
	OP44 G-1
STORE command	CMND 2-201
	SUPR 2-58, 4-7,
	6-117
example	CMND 2-204
operation	CMND 2-203
parameters	CMND 2-201
usage	CMND 2-203
STORE tape format	SUPR F-1
STORE tape format labeled	SUPR F-3
Storing Files	SUPR 4-7
STREAM command	CMND 2-205
example	CMND 2-206
operation	CMND 2-205
parameters	CMND 2-205
usage	CMND 2-205
=STREAMS command	OPER 1-9, 3-55
	OP33 1-9, 3-57
	OP44 1-9, 3-59
Sub-type	SUPR 6-23, 6-81,
	A-1 - A-5,
	B-1 - B-15
Subqueues	INTR 9-5
Substates	INTR 7-2
Subsystem break function	INTR 5-14
Subsystems	CONV 3-1
Suggested log file uses	INTR 3-98
SUPPORT Account	SUPR 4-1
SUSP	OPER 3-11, 3-36,
	3-37, 4-2
	OP33 3-13
	OP44 3-13
	INTR E-13
SUSPEND errors	INTR 2-188
SUSPEND intrinsic	INTR 7-8
specifications	INTR 7-8
usage	INTR 4-19
Suspending processes	OP44 1-9, 3-60
Suspending the calling process	OP33 1-9, 3-58
:SUSPENDSPOOL command	OPER 1-9, 3-56,
	4-12
SWITCHDB intrinsic	

System internals	OPER B-5
	OP33 C-4
	OP44 C-4
User interface	OPER B-13
	OP33 C-12
	OP44 C-12
System Failure, User Logging	OPER 4-35
System failures	OPER B-1, B-17
	OP33 C-1 - C-17
	OP44 C-1 - C-17
System file domain	INTR 10-7
System global breakpoints	DEBUG 2-5, 3-28
System global relative (SY)	
display base	DEBUG 2-11, 3-29
modify base	DEBUG 2-19
SYSTEM HALT indicator	OPER 2-3
System internals (system failure)	OPER B-5
	OP33 C-4
	OP44 C-4
System Library segments	
adding	SUPR 6-50
changing	SUPR 6-15, 6-49
deleting	SUPR 6-49
listing	SUPR 6-49, 6-51
replacing	SUPR 6-50
System logging	OPER 1-4
	OP33 1-3
	OP44 1-3
	SUPR 6-127
	OP44 5-4 - 5-6
System main power switch	
System Manager (SM)	
altering volume set/class	SUPR 4-12
attribute	SUPR 3-1
create and modify accounts	SUPR 3-6
defining volume set/class	SUPR 4-11
definition and functions	SUPR 3-1, 4-1
Displaying Accounting information	SUPR 4-5
System messages	INTR 10-18, 10-19
System messages	OPER 1-2, 6-2
	OP33 1-2
	OP44 1-2
System Modification	SUPR 6-19
System power-down	OPER 5-4
	OP33 5-4
	OP44 5-4
System power-up	OPER 5-6
	OP33 5-5
	OP44 5-6
System procedures	INTR 1-1
System Programs, changing	SUPR 6-15, 6-49
System prompts and messages	OPER 1-5
	OP33 1-4

System segmented library	OP44 1-4
System segmented library break in	DEBUG 2-6, 2-23
System segmented library clear break in	DEBUG 2-9
System segmented library display location of	DEBUG 2-25
System shutdown	OPER 5-3
	OP33 5-3
	OP44 5-3
System Startup and modification	SUPR 6-57
COLDSTART	OPER 4-23, 5-12
	OP33 4-24, 5-10
	OP44 4-23, 5-11
COOLSTART	OPER 4-22, 5-10
	OP33 4-22, 5-8
	OP44 4-23, 5-9
Definition	OPER 4-22
Disc Domain Considerations	OPER 4-23
RELOAD	OPER 4-23, 5-16
	OP33 4-24, 5-14
	OP44 4-23, 5-15
UPDATE	OPER 4-22, 5-14
	OP33 4-22, 5-12
	OP44 4-23, 5-13
WARMSTART	OPER 4-22, 5-8
	OP33 4-22, 5-6
	OP44 4-22, 5-7
System Supervisor (OP)	
attribute	SUPR 3-2
definition and function of	SUPR 3-2, 6-1
SYSTEM SWITCH REGISTER	OPER 2-3
Systems Tables, changing	SUPR 6-10
System timer	INTR 4-42
System traps	INTR 4-35
System volume conditioning	OPER 4-29
	OP33 4-32
	OP44 4-32
Systems controls and indicators	OP44 2-1
	OP33 2-1
Systems Programming Language	
calling intrinsics from	INTR 1-2
description	INTR 1-1
SYSVS, System volume set	SUPR 4-10
T	
T command	
definition	DEBUG 2-25
use	DEBUG 3-30
Tables, changing system	SUPR 6-10
TAKE command	OPER 1-9, 3-57
	OP33 1-9, 3-59

Tape labels	OP44 1-9, 5-61
MPE	INTR 10-75, D-1
writing	INTR 10-84
Tape volumes	OPER 1-3
	OP33 1-3
	OP44 1-3
Tape-mode option	INTR 5-15
TASL Instruction	CONV 3-6
TASR Instruction	CONV 3-6
TELL command	CMND 2-209
operation	CMND 2-210
parameters	CMND 2-209
usage	CMND 2-209
TELOP command	CMND 2-211
example	CMND 2-211
operation	CMND 2-211
parameters	CMND 2-211
usage	CMND 2-211
TEMPERATURE field	OP33 2-7
Temporarily privileged programs	INTR 9-2
Temporary files	INTR 10-7
Temporary registers	
assign value	DEBUG 2-28, 3-17
display	DEBUG 2-13, 3-16
modify	DEBUG 2-21, 3-16
Terminal and line printer carriage-control codes	INTR 5-6
Terminal Buffers	SUPR 6-12, 6-39
Terminal input timer	INTR 5-16
Terminal speed	INTR 5-10
how to change	CMND 1-193
sensing at logon	CMND 2-193
Terminal type	
specifying	SUPR 6-64, 6-81, B-1 - B-15
Terminals	INTR 5-8, 5-9
Terminals, connecting	OPER 5-33
Terminals, IBM 2741	CONV 2-4
Terminals supported by MPE	CMND A-1
Terminate execution	DEBUG 2-16, 3-9
TERMINATE intrinsic	
specifications	INTR 2-190
usage	INTR 4-20
Terminating a process	INTR 4-20
Termtype 10	CONV 2-5
Termtype 11	CONV 2-5
Testing mailbox status	INTR 7-10
TEXT Function	UTIL 11-27
Time and data intrinsics	INTR 4-42
Time limit, TIME= parameter	CMND 2-80, 2-129
Time, how to display	CMND 2-192
Time outs, for IPC	INTR 3-3, 3-8

TIMER intrinsic specifications	INTR 2-191
usage	INTR 4-42
Timer Request List (TRL)	SUPR 6-13, 6-40
TNSL Instruction	CONV 3-6
TOS Instruction	CONV 3-6
Trace stack markers	DEBUG 2-25, 3-20
Transferring data from	
an extra data segment to stack	INTR 8-15
stack to an extra data segment	INTR 8-15
Translating characters from ASCII to EBCDIC	INTR 4-13
Translating characters from EBCDIC to ASCII	INTR 4-13
Transmission speed, how to change	CMND 2-194
Transmitting program Input/output	
from job/session input/output devices	INTR 4-16
Traps	
arithmetic	INTR 4-30
commercial instruction	INTR 4-32
Control-Y	INTR 4-38
enabling and disabling	INTR 4-29
extended precision floating-point	INTR 4-31
library	INTR 4-34
standard	INTR 4-31
system	INTR 4-35
:TUNE	SUPR 2-64, 6-15
Turning logging on and off	OPER 5-29
	OP33 5-27
	OP44 5-28
Types of files	INTR 10-8
Types of procedures	INTR 2-2
U	
U command	
definition	DEBUG 2-26
use	DEBUG 3-30
UDC (user-defined command)	
command errors	CMND 3-13
syntax	CMND 3-1, 3-2
nesting	CMND 3-12
UDC file, generating a list of	CMND 3-6
UDC file, how to catalog	CMND 2-164
UDC file, using Editor to create	CMND 3-10
UDC file, using Editor to modify	CMND 3-10
UDC files, how to list	CMND 3-12
Undefined-length records	INTR 10-3
Unfreezing segments	DEBUG 2-26, 3-30
Unidentified failures	OPER B-2
Unit numbers	
definition	SUPR 6-5
specifying for	SUPR 6-16, 6-80

Unlabeled magnetic tape file	INTR 10-77
Unloading a flexible disc	OP33 5-39
Unloading library procedures	INTR 4-2
UNLOADPROC intrinsic	
specifications	INTR 2-192
usage	INTR 4-3
UNLOCKGLORIN intrinsic	
specifications	INTR 2-193
usage	INTR 6-3
Unlocking files	INTR 10-56
Unlocking global RIN's	INTR 6-3
Unlocking local RIN's	INTR 6-8
UNLOCKLOCRIN intrinsic	
specifications	INTR 2-194
usage	INTR 6-8
UP command	OPER 1-9, 3-58
	OP33 1-9, 3-60
	OP44 1-9, 3-62
	OPER 4-22, 5-14,
	F-1
	OP33 4-22, 5-12
	OP44 4-23, 5-13
	SUPR 6-58, 6-61,
	6-62
	INTR 10-58
	INTR 10-75
	SEGM 1-5, 2-33
	INTR 5-22
UPDATE	
	SUPR 6-10, 6-40
Update	
	SUPR 4-12
	SUPR 4-12, 5-9
	SUPR 4-13
	SUPR 5-10
	SUPR 4-14, 5-10
	SUPR 4-13, 5-10
	INTR 4-47
	INTR 10-62
	OPER B-13
	OP33 C-12
	OP44 C-12
	SUPR 6-155
	OPER 1-4,
	4-35 -4-37,
	5-34, 6-19
	OPER 4-36
	OPER 5-34
	OPER 4-35
	OPER 4-35
	OPER 4-35
	INTR 10-94
Updating a file	
Updating magnetic tape files	
USE segmenter command	
User block transfers	
User Controller Process (UCOP), request queue	
(See also SETCATALOG, SHOWCATALOG)	
User-defined command	
(See also UDC)	
defining	
directory	
establishing catalog	
listing	
syntax	
User-defined job control words	
User file labels	
User interface (system failure)	
User logging	
Powerfail Recovery	
Restarting	
Shutdown	
Startup	
System Failure	
User Logging Facility	

User messages	INTR E-18
User pre-defined files	INTR 10-10
User processes	INTR 7-2
User's access mode	INTR 4-10
User's attributes	INTR 4-10
User's stack segment	INTR 8-1
User-Type Abbreviations	UTIL 8-9
Users	
attributes	SUPR 3-1, 5-9
definition of	SUPR 3-6, 5-4
name of	SUPR 3-6
Purging	SUPR 5-7, 5-8
standard	SUPR 3-3
Using disc space efficiently	INTR 10-4
Using FFILEINFO	INTR 10-68
Using FGETINFO	INTR 10-66
Using numeric values as parameters	INTR 1-8
Using the FCARD intrinsic to operate the HP 7260A Optical Mark Reader	INTR 5-28
Using the VINIT Subsystem	OPER D-11
USL File	
changing information block size on	SEGM 3-23
changing size of	SEGM 3-23
changing the directory block size on	SEGM 3-23
creating	SEGM 3-8
designating	SEGM 3-1
initializing buffers for	SEGM 3-23
using intrinsics to manipulate	SEGM 3-22
Utilities	CONV 2-1
Utility functions of intrinsics	INTR 4-1
UV attribute	SUPR 3-3
UV capability assigning to account	SUPR I-16

V

Variable-length records	INTR 10-3
Vertical format control (VFC)	OP44 4-14 - 4-19
	OP33 4-14 - 4-19
	OPER 4-14
VINIT	OPER D-1 - D-10
	OP33 D-1 - D-13
	OP44 D-1 - D-13
	SUPR 2-69
VINIT subsystem	SUPR 2-69, 6-2,
	I-26
using	SUPR I-25
Virtual device directory	INTR 10-15
Virtual Memory, changing size of	SUPR 6-46
VMOUNT command	OPER 1-9, 3-59
	OP33 1-9, 3-61
	OP44 1-8, 3-63

Volume class	SUPR I-17
	OPER 4-28
	OP33 4-31
	SUPR 4-10, I-2
	OP44 4-31
creating definition	SUPR I-4
Volume set	OPER 4-28, 4-29
	OP33 4-31
	SUPR 4-10, 5-7,
	I-1, I-3
	OP44 4-31
	SUPR I-4
creating definition	CMND 2-41
how to dismount	CMND 2-41
how to mount	SUPR I-14
move to another system	
Volumes, disc	
adding	SUPR 6-46, 6-92
deleting	SUPR 6-45, 6-92
labels	SUPR F-4
list	SUPR 6-91
listing	SUPR 6-45, 6-46,
	6-91, 6-92
organization of	SUPR 6-62
private	SUPR 4-9
table	SUPR 4-9
VSUSER command	OPER 4-31
	SUPR I-17
example	CMND 2-178
usage	CMND 2-178
W	
WARMSTART	OPER 4-22, 5-8,
	F-1
	OP33 4-22, 5-6
	OP44 4-22, 5-7
	SUPR 6-58, 6-61,
	6-62
WARMSTART switch	OP33 2-6
:WARN command	OPER 1-9, 3-61
	OP33 1-9, 3-63
	OP44 1-9, 3-65
WELCOME command	OPER 1-9, 3-63
	OP33 1-9, 3-65
	OP44 1-9, 3-67
WHO intrinsic	
specifications	INTR 2-195
usage	INTR 4-10
Writing	
a file system error-check procedure	INTR 10-46
on a magnetic tape file	INTR 10-88

output to \$STDLIST	INTR 4-18
output to the Operator's Console	INTR 4-18
records into a file in direct-access mode	INTR 10-51
records into a file in sequential order	INTR 10-49
to magnetic tape files	INTR 10-77
user file labels	INTR 10-62
WRITELOG intrinsic	
specifications	INTR 2-198
usage	INTR 10-94

X

X register	
assign value	DEBUG 2-28, 3-17
display	DEBUG 2-13, 3-16
modify	DEBUG 2-21, 3-16
X-OFF control	INTR 5-21
XARITRAP intrinsic	
specifications	INTR 2-199
usage	INTR 4-32
XCONTRAP intrinsic	
specifications	INTR 2-201
usage	INTR 4-41
XLIBTRAP intrinsic	
specifications	INTR 2-202
usage	INTR 4-35
XPLAIN Function	UTIL 11-29
XSYSTRAP intrinsic	
specifications	INTR 2-203
usage	INTR 4-36

Z

Z register	
assign value	DEBUG 2-28, 3-17
display	DEBUG 2-13, 3-16
modify	DEBUG 2-21, 2-28, 3-16
Z to DB area	INTR 4-27
ZSIZE intrinsic	
specifications	INTR 2-204
usage	INTR 4-27

READER COMMENT SHEET

We welcome your evaluation of this manual. Your comments and suggestions help us improve our publications. Please use additional pages if necessary.

Is this manual technically accurate? Yes No (If no, explain under Comments, below.)

Are the concepts and wording easy to understand? Yes No (If no, explain under Comments, below.)

Is the format of this manual convenient in size, arrangement, and readability? Yes No (If no, explain or suggest improvements under Comments, below.)

Comments:

FROM:

Name _____

Company _____

Address _____

FOLD

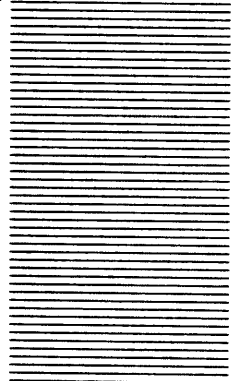
FOLD

FIRST CLASS
PERMIT NO. 1020
SANTA CLARA
CALIFORNIA

BUSINESS REPLY MAIL

No Postage Necessary if Mailed in the United States. Postage will be paid by

**Publications Manager
Hewlett-Packard Company
General Systems Division
5303 Stevens Creek Boulevard
Santa Clara, California 95050**



FOLD

FOLD

Part No. 30000-90045
Printed in U.S.A. 4/81

